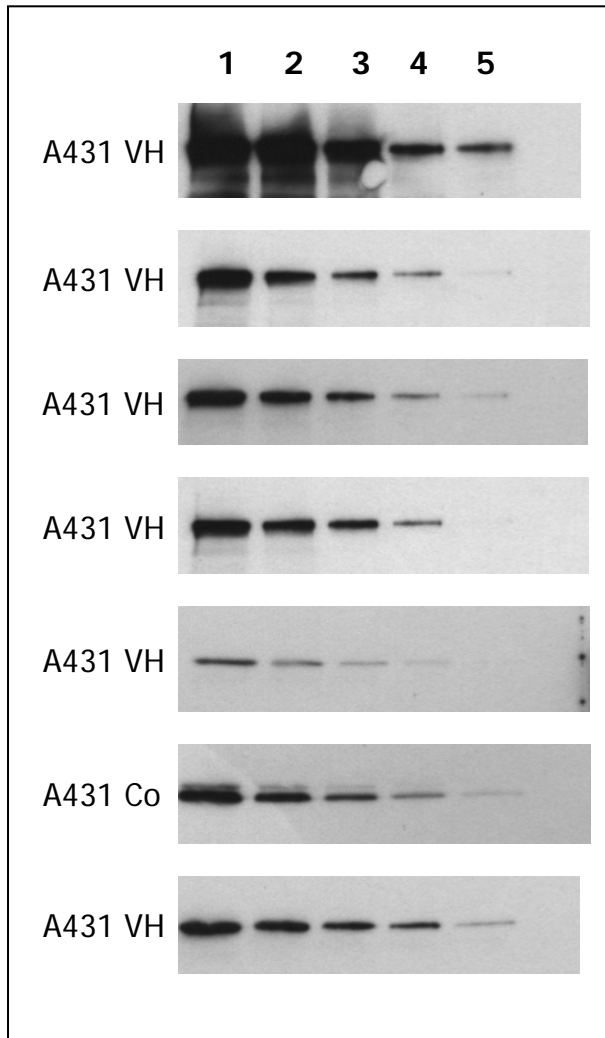


Antibody Sensitivity



EGFR pTyr 845 clone 12A3

EGFR pTyr 1045 clone 11C2

EGFR pSer 1047 clone 1H9

EGFR pTyr 1173 clone 9H2

PKB pSer 473 clone 11E6

MAPK2 N-terminus clone 6H3

fos pSer 374 clone 34E4

Determination of antibody sensitivity

In order to determine antibody sensitivity, whole cell extracts containing defined cell numbers per lane were applied to SDS-PAGE and transferred to PVDF membranes (A431 cells, either untreated or treated with pervanadate; 20.000, 10.000, 5.000, 2.500, or 1.000 cells per lane, respectively).

Immunoblots were probed with the indicated monoclonal antibodies at 0.5 µg/ml.

Sample load per lane:

1	20.000 cells	4	2.500 cells
2	10.000 cells	5	1.000 cells
3	5.000 cells	Co:	untreated cells
		VH:	vanadate treated cells

**nanoTools Antikoerpertechnik
GmbH & Co.KG**

Tscheulinstrasse 21
D-79331 Teningen
GERMANY

E-mail: info@nanotools.de

www.nanotools.de