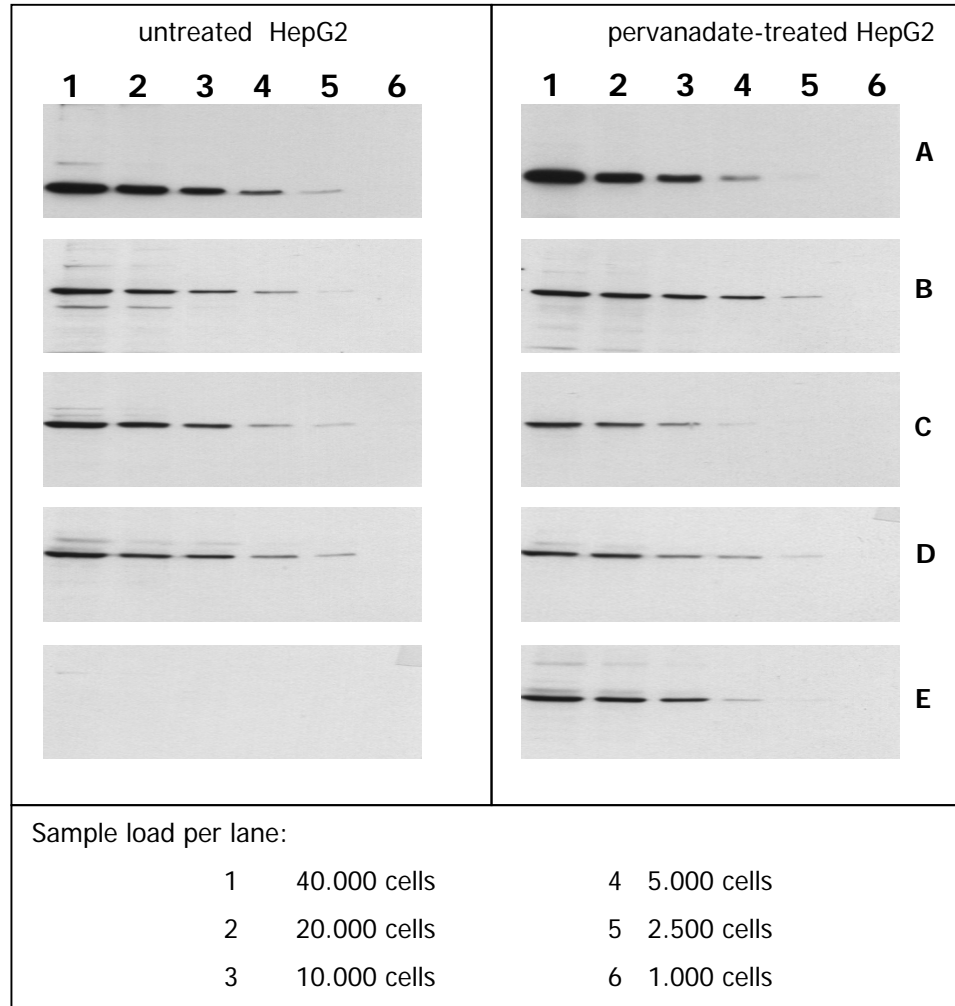


Antibody Sensitivity



Determination of antibody sensitivity

In order to determine antibody sensitivity, whole cell extracts containing defined cell numbers per lane were applied to SDS-PAGE and transferred to PVDF membranes (HepG2 cells, either untreated or pervanadate-treated; 40.000, 20.000, 10.000, 5.000, 2.500, or 1.000 cells per lane, respectively).

Immunoblots were probed with the indicated monoclonal antibodies at 0.5 µg/ml for 1h at 15-22°C (Film exposure time: 3 min, except D, E: 30 sec).