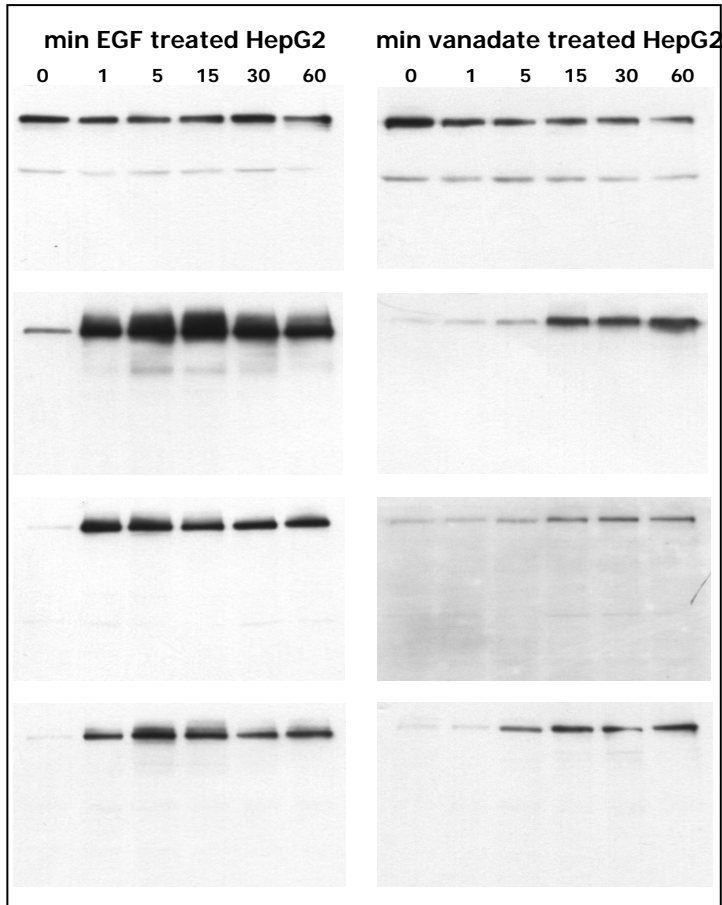


Antibody specificity is retained after vanadate induced hyperphosphorylation



HepG2 cells were treated with EGF or pervanadate for the indicated times. Cell lysates of approx. 20.000 cells per lane were probed with the indicated monoclonal antibodies at 0.5 µg/ml.

EGFR C-terminus
Clone 13G8

EGFR is slowly degraded after stimulation

EGFR pTyr 845
Clone 12A3

src family kinases phosphorylate the EGFR at Tyr 845 within the activation loop

EGFR pTyr 1045
Clone 11C2

EGFR phosphorylation at Y1045 creates a docking site for cbl and targets the receptor for degradation

EGFR pTyr 1173
Clone 9H2

phosphorylation of Y1173 is an indicator for EGFR autophosphorylation