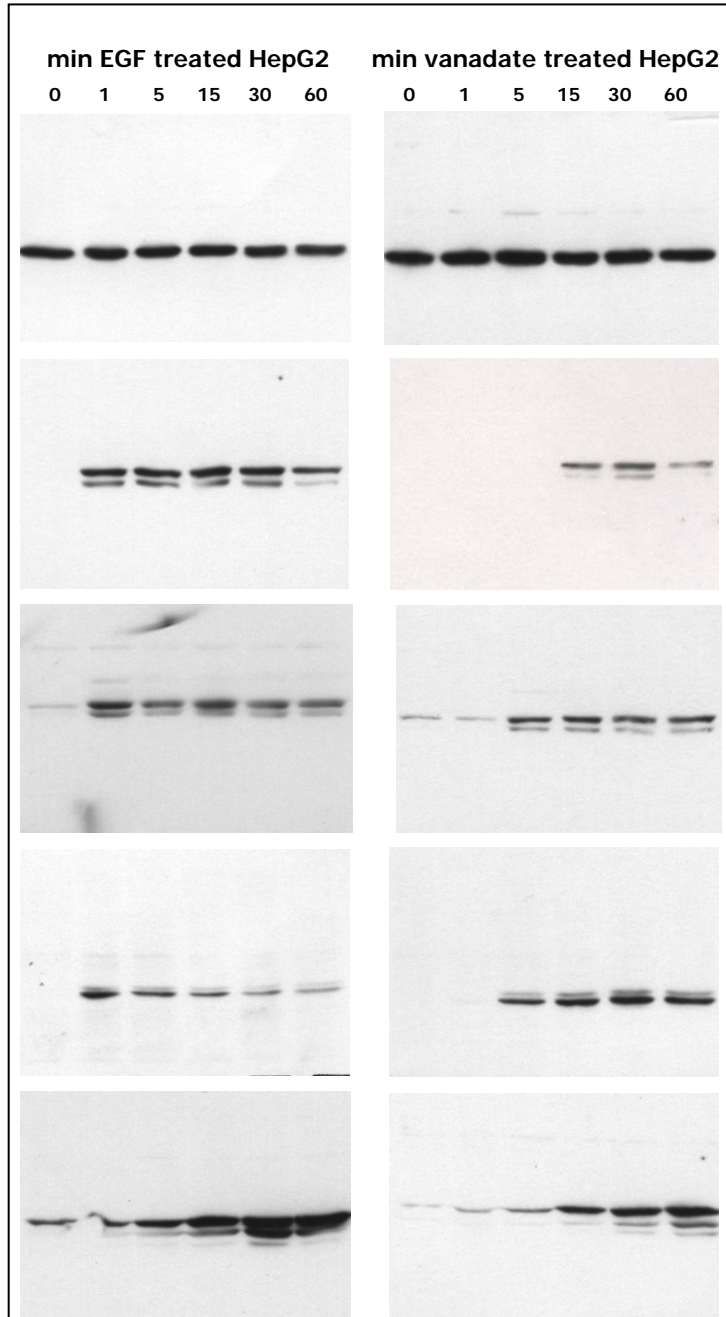


# EGFR / erbB2 Downstream Signaling

HepG2 cells were treated with EGF or pervanadate for the indicated times. Cell lysates of approx. 20.000 cells per lane were probed with the indicated monoclonal antibodies at 0.5 µg/ml.



**MAPK2 C-terminus**  
Clone 6G11

**Shc pTyr 239 / pTyr 240**  
Clone 1E3

**Shc pTyr 317**  
Clone 15E11

**MAPK pThr-Glu-pTyr**  
Clone 12D4

**Fos pSer 374**  
Clone 34E4