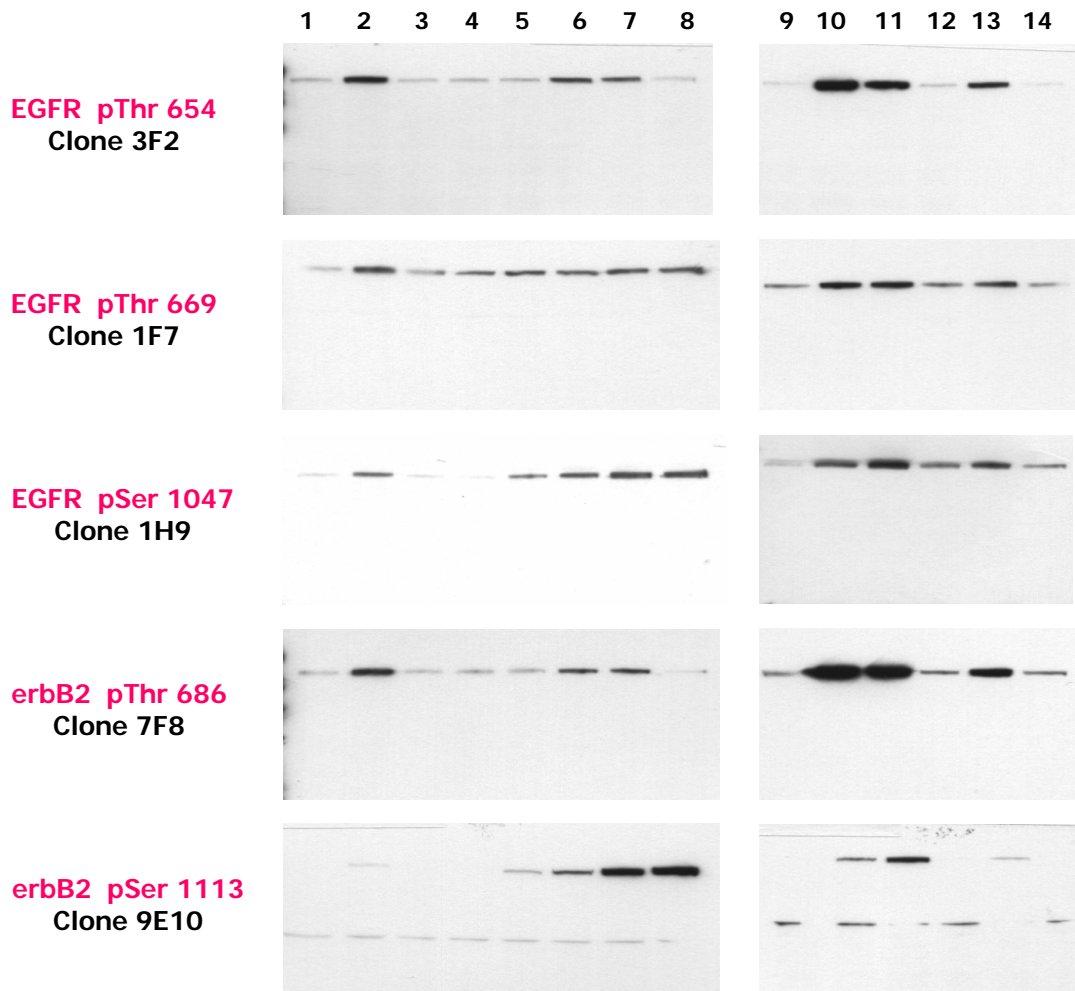


EGFR/erbB2 Activation and Transactivation



A431 cells were either untreated or treated with various stimuli (see below). Cell lysates (approx. 20.000 cells/lane) were applied to SDS-PAGE and transferred to PVDF membranes. Immunoblots were developed with the indicated monoclonal antibodies at 0.5 µg/ml.

Lane 1: A431 cells untreated

Lane 9: A431 cells untreated

A431 cells treated with:

A431 cells treated with:

Lane 2: EGF

Lane 10: PMA

Lane 3: IGF-1

Lane 11: LPA

Lane 4: TGF beta

Lane 12: Ceramide

Lane 5: TNF alpha

Lane 13: Bradykinin

Lane 6: H2O2

Lane 14: Bombesin

Lane 7: Sorbitol

Lane 8: Anisomycin