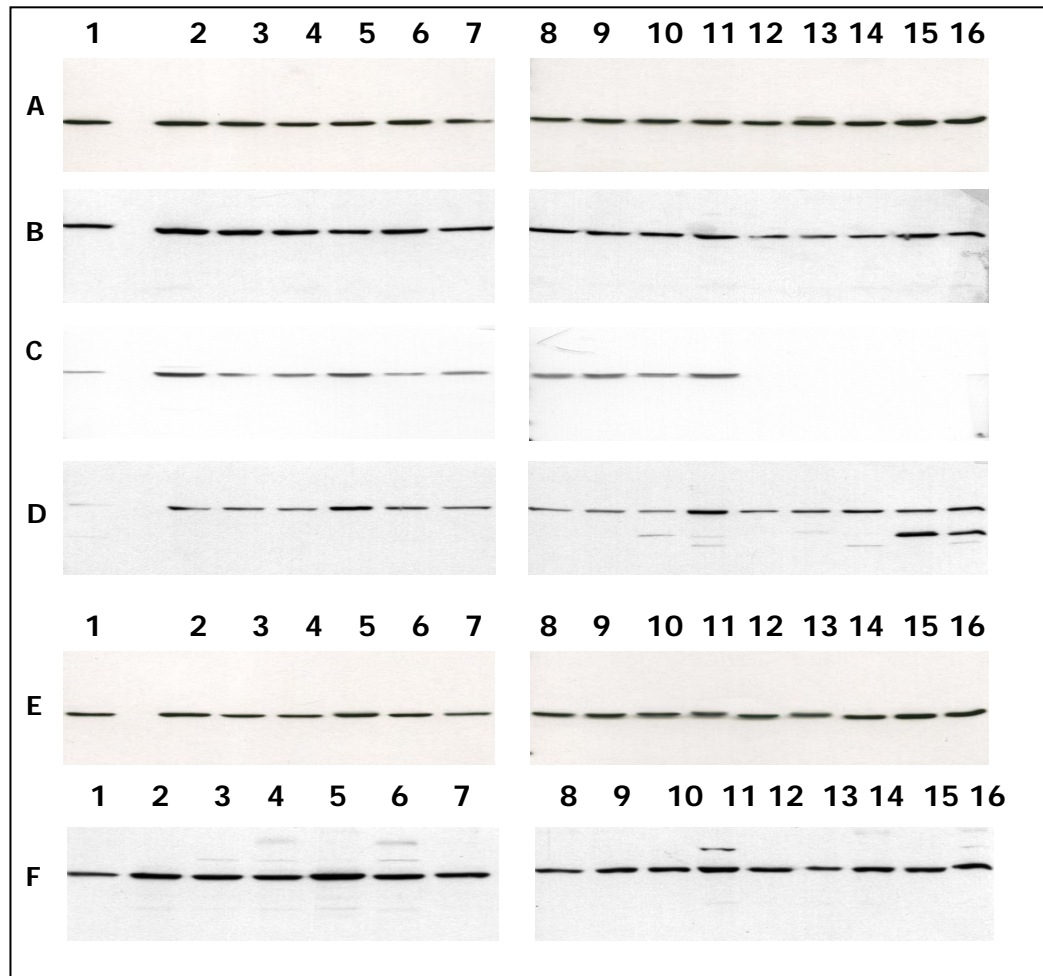


Detection of PKB/akt with Monoclonal Antibodies in Different Cell Lines



Lane				Lane			
1: A431	6: MDA-MB 231	8: HeLa	13: PC12				
2: SW480	7: T47D	9: HepG2	14: CMT				
3: SW620		10: HEK 293	15: Neuro 2A				
4: HT29		11: SH-SY5Y	16: 3T3				
5: MCF-7		12: MDCK					

Calibration of the protein load with

MAPK2/erk2 clone 6G11

#0011-100/MAPK-6G11

PKB dephospho clone 11A11

#0049-100/PKB-11A11

PKBbeta/akt2 clone 8B7

#0179-100/PKBb-8B7

PKB clone 5C10

#0119-100/PKB-5C10

Calibration of the protein load with

MAPK2/erk2 clone 6G11

#0011-100/MAPK-6G11

PKB pSer 473 clone 11E6

#0108-100/PKB-11E6

Detection of PKB/akt

PKB/akt is routinely detected in different cell lines. Whole extracts of untreated (A,B,C,D) and vanadate-treated (E,F) cells containing approx. 20.000 cells per lane (see calibration) were applied to SDS-PAGE and transferred to PVDF membranes.

Immunoblots were probed with the indicated monoclonal antibodies at 0.5 µg/ml for 1 h at 15-22 °C (Film exposure time: 30 sec).

NOTE: Antibody reactivity depends on the K_D value of the antibody, the protein amount loaded on the gel, and the amount of target protein in the extract.

nanoTools Antikoerpertechnik GmbH & Co.KG

Tscheulinstrasse 21 . D-79331 Teningen . GERMANY

E-mail: info@nanotools.de . www.nanotools.de