

Mouse Monoclonal Antibody to

Glutathione-S-transferase (pGEX)

clone 4H3

Order No.: 0013-100/GST-4H3
Size (µg) 100
Lot No.: 0013S



www.nanotools.de

orders & support:

email: info@nanotools.de
 phone: +49-7641-455 670
 fax: +49-7641-455 671

01/050307F

| Isotype | Species Reactivity | Applications | Mol. Weight | Ref. Cell Line | Epitope | Immunogen |
|---------|--------------------|---------------|-------------|----------------|---------|--|
| IgG2a | | WB, ELISA, IP | 26 kDa | none | | recombinant GST (pGEX), <i>Schistosoma japonicum</i> |

Background and Specificity:

The glutathione-S-transferase (GST) of *Schistosoma japonicum* is widely used as fusion partner in protein expression systems. The GST can be used for affinity purification of fusion proteins on immobilized glutathion as well as tag sequence if antibodies specific for the expressed protein are not available.

Mab GST-4H3 specifically interacts with GST of *Schistosoma japonicum* that is encoded by the pGEX expression vectors. The antibody does not interact with mammalian GST proteins.

Related Products

Purification: The antibody was purified from serum-free cell culture supernatant by subsequent thiophilic adsorption and size exclusion chromatography.

Formulation: lyophilized from 1 ml 2 x PBS / 0.09 % Na-azide / PEG and Sucrose.

Reconstitution: Reconstitute with 1 ml H₂O (15 min, RT).

Stability: For long-term storage, freeze lyophilizate upon arrival (-20°C). Upon reconstitution, aliquote and freeze in liquid nitrogen; reconstituted antibody can be stored frozen at -80°C up to 1 year. Thaw aliquots at 37°C. Thawed aliquots may be stored at 4°C up to 3 months.

Avoid repeated freeze / thaw cycles.

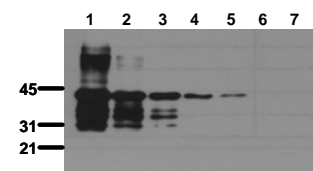
Positive Control: none

Immunoblotting: 0.5 µg/ml for HRPO/ECL detection.
Recommended blocking buffer: Casein/Tween 20 based blocking and blot incubation buffer, e.g. nanoTools product #3031-500/CPPT or #3031-3000/CPPT.

Immunoprecipitation: use at 1 - 10 µg/ml

Immunocytochemistry: ND

ELISA: use at 0.05 µg/ml



Antibody sensitivity

Recombinant GST-PIN1 was separated by SDS-PAGE and transferred to PVDF membranes. Immunoblots were probed with mab 4H3 (0.5 µg/ml) for 1h at RT and developed by ECL (exp. time: 30 sec).
 lane 1: 100ng, lane 2: 50ng, lane 3: 25ng, lane 4: 10ng, lane 5: 5ng, lane 6: 2ng, lane 7: 1ng

All products are supplied for research and investigational use only. Not for use in humans or laboratory animals.