

## Mouse Monoclonal Antibody to

# Phosphothreonine

## clone 14B3

**Order No.:** 0026-100/PTHR-14B3  
**Size (µg)** 100  
**Lot No.:** 0026S



[www.nanotools.de](http://www.nanotools.de)

**orders & support:**

email: [info@nanotools.de](mailto:info@nanotools.de)  
 phone: +49-7641-455 670  
 fax: +49-7641-455 671

03/160307F

Isotype	Species Reactivity	Applications	Mol. Weight	Ref.Cell Line	Epitope	Immunogen
IgG1	human, mouse, rat, dog	WB, ELISA, IP	pattern			phosphopeptide conjugated to KLH

### Background and Specificity:

Phosphorylation and dephosphorylation of cellular proteins are central steps in transducing extracellular signals to the cell nucleus. Phosphorylated epitopes may serve as docking sites for the assembly of protein complexes or may alter the 3-dimensional protein structure thus modulating enzymatic activity or the ability to undergo protein-protein-interactions. Modification of proteins on serine residues is mediated by serine/threonine kinases.

**Mab PTHR-14B3** recognizes a broad range of threonine-phosphorylated proteins in crude cell extracts, providing a valuable tool for non-radioactive phosphothreonine detection.

### Related Products

#### mab against Phosphoserine

- #0018-100/pSer-1C8
- #0019-100/pSer-4A3
- #0020-100/pSer-4A9
- #0021-100/pSer-4H4
- #0022-100/pSer-7F12
- #0023-100/pSer-16B4

#### mab against Phosphothreonine

- #0024-100/pThr-1E11
- #0025-100/pThr-4D11

**Purification:** The antibody was purified from serum-free cell culture supernatant by subsequent thiophilic adsorption and size exclusion chromatography.

**Formulation:** lyophilized from 1 ml 2 x PBS / 0.09 % Na-azide / PEG and Sucrose.

**Reconstitution:** Reconstitute with 1 ml H<sub>2</sub>O (15 min, RT).

**Stability:** For long-term storage, freeze lyophilizate upon arrival (-20°C). Upon reconstitution, aliquote and freeze in liquid nitrogen; reconstituted antibody can be stored frozen at -80°C up to 1 year. Thaw aliquots at 37°C. Thawed aliquots may be stored at 4°C up to 1 week.

**Avoid repeated freeze / thaw cycles.**

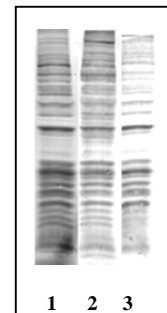
**Positive Control:** #0901: phosphoserine/phosphothreonine positive control

**Immunoblotting:** 1 µg/ml for HRPO/ECL detection  
**Recommended blocking buffer:** BSA/Tween 20 based blocking buffer.  
**DO NOT USE MILK OR CASEIN FOR BLOCKING!**

**Immunoprecipitation:** use at 1 - 10 µg per 10<sup>6</sup> pervanadate-treated A431 cells

**Immunocytochemistry:** ND

**ELISA:** use at 0.05 µg/ml



#### Phosphothreonine Detection:

A431 cell Lysates probed with  
 lane 1 mab 14B3 (IgG), 1 µg/ml  
 lane 2 mab 4D11 (IgM), 1 µg/ml  
 lane 3 mab 1E11 (IgG), 1 µg/ml

**All products are supplied for research and investigational use only. Not for use in humans or laboratory animals.**