

Mouse Monoclonal Antibody to

SAPK2 α /p38 α

clone 20B11

Order No.: 0035-100/SAPK2 α -20B11
Size (μ g) 100
Lot No.: 0035S

www.nanotools.de

orders & support:

email: info@nanotools.de
 phone: +49-7641-455 670
 fax: +49-7641-455 671



06/040613F

Isotype	Species Reactivity	Applications	Mol. Weight	Ref.Cell Line	Epitope	Immunogen
IgG1	human, mouse, rat, dog	WB, ELISA	38 kDa	MDA-MB-231	N-terminus, interacts with SAPK2 (p38/CSBP); does not bind to Mxi2	peptide conjugated to KLH

Background and Specificity:

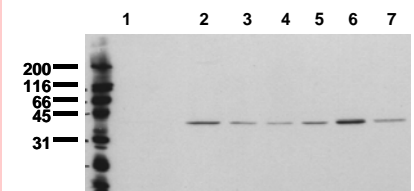
Stress-activated Protein Kinases (SAPKs) are strongly activated in response to adverse stimuli such as heat and osmotic shock, UV light and other DNA-damaging reagents, and inhibitors of protein synthesis. They are also activated strongly in response to agonists that are released or produced under conditions of stress, such as proinflammatory cytokines. Stress-activated Protein Kinase 2 (SAPK2/p38) phosphorylates conserved Ser - Pro or Thr - Pro peptide motifs.

Mab SAPK2-20B11 specifically interacts with the N-terminus of SAPK2 / p38 / CSBP kinases. Mab SAPK2-20B11 does not bind to Mxi2.

Related Products

- mab to SAPK1 α /jnk2 (N-terminus)**
#0190-100/SAPK1a-12C5
- mab to SAPK1 γ /jnk1 (N-terminus)**
#0200-100/SAPK1g-5D10
- mab to SAPK1/2 (T - G/P - pY)**
#0041-100/SAPK1/2-9H8
- mab to SAPK2 α (N-terminus)**
#0034-100/SAPK2a-13D5 (crossreaction with Mxi2)
- mab to SAPK2 δ (N-terminus)**
#0053-100/SAPK2d-5H7
- mab to MAPK 1/2 (pT-E-pY)**
#0012-100/MAPK-12D4
- mab to MAPK 2 (C-terminus)**
#0011-100/MAPK2-6G11
- mab to MAPK 2 (N-terminus)**
#0178-100/MAPK2-6H3
- mab to MAPK 2 (internal sequence)**
#0239-100/MAPK2-12A4
- mab to MAPK7/erk5**
#0223-100/MAPK7/erk5-12F2
- mab to Mxi 2 (N-terminus)**
0046-100/Mxi-2F2

Purification:	The antibody was purified from serum-free cell culture supernatant by subsequent thiophilic adsorption and size exclusion chromatography.
Formulation:	lyophilized from 1 ml PBS / 0.09 % Na-azide / PEG and Sucrose
Reconstitution:	Reconstitute with 1 ml H ₂ O (15 min, RT).
Stability:	For long term storage, freeze lyophilizate upon arrival (-20°C). Upon reconstitution, aliquote and freeze in liquid nitrogen; reconstituted antibody can be stored frozen at -80°C up to 1 year. Thaw aliquots at 37°C. Thawed aliquots may be stored at 4°C up to 3 months.
	Avoid repeated freeze/thaw cycles.
Positive Control:	#1031: Cell lysate from untreated MDA-MB-231 cells.
Immunoblotting:	0.5 μ g/ml for HRPO/ECL detection Recommended blocking buffer: Casein/Tween 20 based blocking and blot incubation buffer, e.g. nanoTools product #3031-500/CPPT or #3031-3000/CPPT.
Immunoprecipitation:	ND
Immunocytochemistry:	ND
ELISA:	use at 0.05 μ g/ml



Detection of endogenous SAPK2alpha

Whole cell lysates of serum starved tumor cells (20.000 cells per lane) were applied to SDS-PAGE and transferred to a PVDF membrane. The immunoblot was probed with mab SAPK2a-20B11 (0.5 μ g/ml) for 1h at RT and developed by ECL (exp. time: 30 sec).

lane 1: A431; lane 2: SW480; lane 3: SW620; lane 4: HT29;
 lane 5: MCF7; lane 6: MDA-MB231; lane 7: T47D

All products are supplied for research and investigational use only. Not for use in humans or laboratory animals.