

Mouse Monoclonal Antibody to

Mxi2 (N-terminus)

clone 2F2

Order No.: 0046-100/Mxi-2F2
Size (µg) 100
Lot No.: 0046S



www.nanotools.de

orders & support:

email: info@nanotools.de
 phone: +49-7641-455 670
 fax: +49-7641-455 671

02/150307F

Isotype	Species Reactivity	Applications	Mol. Weight	Ref.Cell Line	Epitope	Immunogen
IgG1	human, mouse, rat, dog	WB, ELISA, IP	30/38 kDa	A431	N-terminus	peptide conjugated to KLH

Background and Specificity:

Mxi2 is a splice variant of SAPK2 α (p38). Stress-activated protein kinases (SAPK) are strongly activated in response to adverse stimuli such as heat and osmotic shock, UV light and other DNA-damaging reagents, and inhibitors of protein synthesis. They are also activated strongly in response to agonists that are released or produced under conditions of stress, such as proinflammatory cytokines.

Mab Mxi-2F2 is directed against the N-terminus of Mxi2.

Related Products

- mab to SAPK1 α /jnk2 (N-terminus)**
#0190-100/SAPK1 α /jnk2-12C5
- mab to SAPK1b/jnk3 (N-terminus)**
#0220-100/SAPK1b/jnk3-4G6
- mab to SAPK1 γ /jnk1 (N-terminus)**
#0200-100/SAPK1 γ -5D10
- mab to SAPK1/2 (T - G/P - pY)**
#0041-100/SAPK1/2-9H8
- mab to SAPK2 α (N-terminus)**
#0034-100/SAPK2 α -13D5
#0035-100/SAPK2 α -20B11
- mab to SAPK2 δ (N-terminus)**
#0053-100/SAPK2 δ -5H7

Purification: The antibody was purified from serum-free cell culture supernatant by subsequent thiophilic adsorption and size exclusion chromatography.

Formulation: lyophilized from 1 ml 2 x PBS / 0.09 % Na-azide / PEG and Sucrose.

Reconstitution: Reconstitute with 1 ml H₂O (15 min, RT).

Stability: For long-term storage, freeze lyophilizate upon arrival (-20°C). Upon reconstitution, aliquote and freeze in liquid nitrogen; reconstituted antibody can be stored frozen at -80°C up to 1 year. Thaw aliquots at 37°C. Thawed aliquots may be stored at 4°C up to 3 months.

Avoid repeated freeze / thaw cycles.

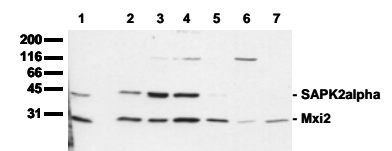
Positive Control: #0831: Cell lysate from untreated A431 cells

Immunoblotting: 0.5 µg/ml for HRPO/ECL detection
Recommended blocking buffer: Casein/Tween 20 based blocking and blot incubation buffer, e.g. nanoTools product #3031-500/CPPT or #3031-3000/CPPT.

Immunoprecipitation: use at 1 - 10 µg per 10⁶ pervanadate-treated A431 cells

Immunocytochemistry: ND

ELISA: use at 0.05 µg/ml



Detection of endogenous Mxi2 / SAPK2alpha

Whole cell lysates of serum starved tumor cells (20.000 cells per lane) were applied to SDS-PAGE and transferred to a PVDF membrane. The immunoblot was probed with mab Mxi-2F2 (0.5 µg/ml) for 1h at RT and developed by ECL (exp. time: 30 sec). Mab Mxi-2F2 recognizes SAPK2 α /p38 at 38 kDa and its splice variant Mxi2 at 30 kDa.

lane 1: A431; lane 2: SW480; lane 3: SW620; lane 4: HT29; lane 5: MCF7; lane 6: MDA231; lane 7: T47D

All products are supplied for research and investigational use only. Not for use in humans or laboratory animals.