

Mouse Monoclonal Antibody to

STAT6 (aa 650-670)

clone 8C12

Order No.: 0063-100/STAT6-8C12
Size (µg) 100
Lot No.: 0063S



www.nanotools.de

orders & support:

email: info@nanotools.de
 phone: +49-7641-455 670
 fax: +49-7641-455 671

03/080507F

Isotype	Species Reactivity	Applications	Mol. Weight	Ref.Cell Line	Epitope	Immunogen
IgG1	human, dog	WB, ELISA, IHC	100 kDa	HepG2	aa 650-670	peptide conjugated to KLH

Background and Specificity:

The STAT proteins serve as both cytoplasmic signal transducers and nuclear activators of transcription. STATs are mediators involved in cytokine signalling. In response to a specific cytokine signal, STAT proteins are phosphorylated on conserved tyrosine residues. Phosphorylated STAT proteins dimerize via their SH2 domains and move to the nucleus. The STAT dimers bind to specific DNA elements resulting in transcriptional regulation of downstream target genes.

STAT6 is activated primarily by IL-4 and IL-13. Upon activation, STAT6 is phosphorylated at tyrosine 641 by Janus Kinase (JAK). Phosphorylated STAT6 forms head-to-tail heterodimers and translocates to the nucleus where it participates in transcriptional control.

Mab STAT6-8C12 specifically recognizes STAT6 at 100 kDa.

Related Products

mab to STAT1 (phospho-Ser 727)

#0176-100/STAT1-12C5

mab to STAT3 (phospho-Tyr 705)

#0036-100/STAT3-9E12

mab to STAT3 (phospho-Ser 727)

#0145-100/STAT3-23G5

mab to STAT5 A/B (phospho-Tyr 695/699)

#0121-100/STAT5-5G4

mab to STAT6 (phosph-Tyr 641)

#0079-100/STAT6-16E12

Purification: The antibody was purified from serum-free cell culture supernatant by subsequent thiophilic adsorption and size exclusion chromatography.

Formulation: lyophilized from 1 ml 2 x PBS / 0.09 % Na-azide / PEG and Sucrose.

Reconstitution: Reconstitute with 1 ml H₂O (15 min, RT).

Stability: For long-term storage, freeze lyophilizate upon arrival (-20°C). Upon reconstitution, aliquote and freeze in liquid nitrogen; reconstituted antibody can be stored frozen at -80°C up to 1 year. Thaw aliquots at 37°C. Thawed aliquots may be stored at 4°C up to 3 months.

Avoid repeated freeze / thaw cycles.

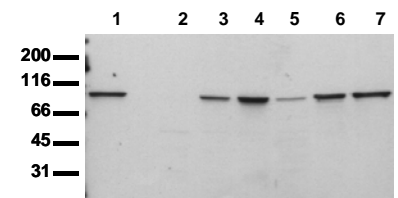
Positive Control: #0811: Cell lysate from untreated HepG2 cells

Immunoblotting: 1 µg/ml for HRPO/ECL detection
Recommended blocking buffer: Casein/Tween 20 based blocking and blot incubation buffer, e.g. nanoTools product #3031-500/CPPT or #3031-3000/CPPT.

Immunoprecipitation: ND

Immunocytochemistry: ND

ELISA: use at 0.05 µg/ml



Detection of endogenous STAT6

Whole cell lysates of serum starved tumor cells (20.000 cells per lane) were applied to SDS-PAGE and transferred to a PVDF membrane. The immunoblots was probed with mab STAT6-8C12 (0.5 µg/ ml) for 1h at RT and developed by ECL (exp. time: 30 sec).

lane 1: A431; lane 2: SW480; lane 3: SW620; lane 4: HT29; lane 5: MCF7; lane 6: MDA-MB231; lane 7: T47D

All products are supplied for research and investigational use only. Not for use in humans or laboratory animals.