

## Mouse Monoclonal Antibody to

# src (phospho-Tyr 416)

## clone 9A6

**Order No.:** 0080-100/src-9A6  
**Size (µg)** 100  
**Lot No.:** 0080S



[www.nanotools.de](http://www.nanotools.de)

**orders & support:**

email: [info@nanotools.de](mailto:info@nanotools.de)  
 phone: +49-7641-455 670  
 fax: +49-7641-455 671

03/080507F

| Isotype | Species Reactivity | Applications                   | Mol. Weight | Ref.Cell Line | Epitope                                | Immunogen                        |
|---------|--------------------|--------------------------------|-------------|---------------|--|----------------------------------|
| IgG3    | human, mouse       | WB, ELISA, Flow cytometry, ICC | 60 kDa      | none          | phosphotyrosine 416<br>D N E p Y T A R | phosphopeptide conjugated to KLH |

### Background and Specificity:

Src is the best understood member of a family of nine tyrosine kinases regulating cellular responses to extracellular stimuli. Src becomes activated upon dephosphorylation of Tyr 527, leading to a conformational change of the src molecule towards an "open", active conformation which allows binding to other proteins via the SH2 and SH3 domain. Activated src phosphorylates a variety of substrates involved in the mitogenic signalling pathway, cytoskeletal organization, cell-substrate adhesion, cell-cell adhesion, cell-cell communication, and RNA processing.

**Mab src-9A6** specifically interacts with activated src phosphorylated at Tyr 416 and with src family kinases phosphorylated at the corresponding Tyr in the activation loop. The antibody does not crossreact with the non-phosphorylated form of src nor with unrelated phosphorylation sites.

### Related Products

**mab to src (N-terminus)**  
#0170-100/src-11F1

**mab to src (pTyr 416), biotinylated**  
#0080-100Biotin/src-9A6

**mab to yes (N-terminus)**  
#0169-100/yes-2B8

**Purification:** The antibody was purified from serum-free cell culture supernatant by subsequent thiophilic adsorption and size exclusion chromatography.

**Formulation:** lyophilized from 1 ml 2 x PBS / 0.09 % Na-azide / PEG and Sucrose.

**Reconstitution:** Reconstitute with 1 ml H<sub>2</sub>O (15 min, RT).

**Stability:** For long-term storage, freeze lyophilizate upon arrival (-20°C). Upon reconstitution, aliquote and freeze in liquid nitrogen; reconstituted antibody can be stored frozen at -80°C up to 1 year. Thaw aliquots at 37°C. Thawed aliquots may be stored at 4°C up to 3 months.

**Avoid repeated freeze / thaw cycles.**

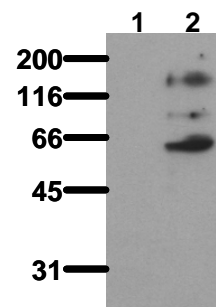
**Positive Control:** none

**Immunoblotting:** 0.5 µg/ml for HRPO/ECL detection  
**Recommended blocking buffer:** Casein/Tween 20 based blocking and blot incubation buffer, e.g. nanoTools product #3031-500/CPPT or #3031-3000/CPPT.

**Immunoprecipitation:** ND

**Immunocytochemistry:** ND

**ELISA:** use at 0.05 µg/ml



Phosphospecificity

Whole cell extracts of control (co) and pervanadate stimulated HEK-293 tumor cells were applied to SDS-PAGE (ca 20.000 cells per lane) and transferred to PVDF membranes. Immunoblots were probed with mab src 9A6 (0.5 µg/ml) for 1h at RT and developed by ECL (exp. time: 30 sec).  
 lane1: Co; lane2: Pervanadate

**All products are supplied for research and investigational use only. Not for use in humans or laboratory animals.**