

Mouse Monoclonal Antibody to

shc (phospho-Tyr 239/240)

clone 1E3

Order No.: 0093-100/shc-1E3

Size (µg): 100

Lot No.: 0093S

www.nanotools.de

orders & support:

email: info@nanotools.de

phone: +49-7641-455 670

fax: +49-7641-455 671

03/080507F

Isotype	Species Reactivity	Applications	Mol. Weight	Ref. Cell Line	Epitope	Immunogen
IgG1	human, mouse, dog	WB, ELISA, IHC	46/52/66 kDa	HepG2	phosphotyrosine 239/240 D H Q pY pY N D F	phosphopeptide conjugated to KLH

Background and Specificity:

Mammalian cells can express three alternatively spliced isoforms of the shc adaptor protein: shc/p46, shc/p52 and shc/p66. shc/p66 contains a unique N-terminal protein domain. In addition to tyrosine phosphorylation of Tyr 239/240 and/or Tyr 317, shc/p66 is phosphorylated at serine 36, e.g. in response to EGF. Serine phosphorylation of shc/p66 impairs its ability to bind to the activated EGF receptor thus inhibiting EGF receptor downstream signaling pathways.

Mab shc-1E3 specifically recognizes shc when it is phosphorylated at Tyr 239/Tyr 240.

Related Products

mab to shc (C-terminus)

#0151-100/shc-11F6

mab to shc (phospho-Tyr 317)

#0100-100/shc-15E11

mab to shc/p66 (N-terminus)

#0180-100/shc/p66-24E4

mab to shc/p66 (phospho-Ser 36)

#0094-100/shc/p66-6E10

Purification:	The antibody was purified from serum-free cell culture supernatant by subsequent thiophilic adsorption and size exclusion chromatography.
Formulation:	lyophilized from 1 ml PBS / 0.09 % Na-azide / PEG and Sucrose.
Reconstitution:	Reconstitute with 1 ml H ₂ O (15 min, RT).
Stability:	For long-term storage, freeze lyophilizate upon arrival (-20°C). Upon reconstitution, aliquote and freeze in liquid nitrogen; reconstituted antibody can be stored frozen at -80°C up to 1 year. Thaw aliquots at 37°C. Thawed aliquots may be stored at 4°C up to 3 months.

Avoid repeated freeze / thaw cycles.

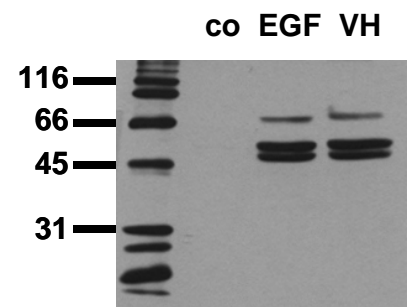
Positive Control:	#0812: Cell lysate from pervanadate-treated HepG2 cells
Immunoblotting:	0.5 µg/ml for HRPO/ECL detection Recommended blocking buffer: Casein/Tween 20 based blocking and blot incubation buffer, e.g. nanoTools product #3031-500/CPPT or #3031-3000/CPPT.

Immunoprecipitation: ND

Immunocytochemistry: ND

ELISA: use at 0.05 µg/ml

All products are supplied for research and investigational use only. Not for use in humans or laboratory animals.



Phosphospecificity

Whole cell extracts of control (co), EGF-stimulated (EGF) or pervanadate-treated (VH) A549 tumor cells were applied to SDS-PAGE (ca. 20.000 cells per lane) and transferred to a PVDF membrane. The immunoblot was probed with mab shc-1E3 (0.5 µg/ml) for 1h at RT and developed by ECL (exp. time: 30 sec).