

Mouse Monoclonal Antibody to

shc/p66 (phospho-Ser 36)

clone 6E10

Order No.: 0094-100/shc/p66-6E10
Size (µg) 100
Lot No.: 0094S



www.nanotools.de

orders & support:

email: info@nanotools.de
 phone: +49-7641-455 670
 fax: +49-7641-455 671

05/271114F

Isotype	Species Reactivity	Applications	Mol. Weight	Ref. Cell Line	Epitope	Immunogen
IgG1	human, mouse, dog	WB	66 kDa	HepG2	Phosphoserine 36 E L P pS P S A	phosphopeptide conjugated to KLH

Background and Specificity:

Mammalian cells can express three alternatively spliced isoforms of the shc adaptor protein: shc/p46, shc/p52 and shc/p66. shc/p66 contains a unique N-terminal protein domain. In addition to tyrosine phosphorylation of Tyr 239/240 and/or Tyr 317, shc/p66 is phosphorylated at serine 36, e.g. in response to EGF.

Serine phosphorylation of shc/p66 impairs its ability to bind to the activated EGF receptor thus inhibiting EGF receptor downstream signalling pathways.

Mab shc/p66-6E10 specifically recognizes shc/p66 when it is phosphorylated at serine 36. We recommend to immunoprecipitate shc/p66 prior to detection with mab shc/p66-6E10.

Related Products

mab to shc (C-terminus)

#0151-100/shc-11F6

mab to shc (phospho-Tyr239/240)

#0093-100/shc-1E3

mab to shc (phospho-Tyr 317)

#0100-100/shc-15E11

mab to shc/p66 (N-terminus)

#0180-100/shc/p66-24E4

Purification: The antibody was purified from serum-free cell culture supernatant by subsequent thiophilic adsorption and size exclusion chromatography.

Formulation: lyophilized from 1 ml PBS / 0.09 % Na-azide / PEG and Sucrose.

Reconstitution: Reconstitute with 1 ml H₂O (15 min, RT).

Stability: For long-term storage, freeze lyophilizate upon arrival (-20°C). Upon reconstitution, aliquote and freeze in liquid nitrogen; reconstituted antibody can be stored frozen at -80°C up to 1 year. Thaw aliquots at 37°C. Thawed aliquots may be stored at 4°C up to 3 months.

Avoid repeated freeze / thaw cycles.

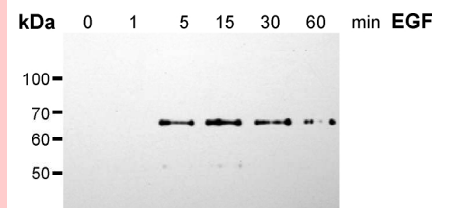
Positive Control: #0816: shc/p66 precipitated from PMA-treated HepG2 cells

Immunoblotting: Recommended blocking buffer BPPT: 1% (w/v) BSA, 1% (w/v) PEG 4000, 1% (w/v) Polyvinylpyrrolidone (PVP), 0.1% (v/v) Tween 20, 2 x PBS

Immunoprecipitation: ND

Immunocytochemistry: ND

ELISA: ND



Immunoblot Analysis

HeLa cells were cultured under serum-free conditions for 24h and subsequently stimulated with 10 ng/ml EGF. Cells were lysed with RIPA buffer and shc immunoprecipitated with polyclonal anti-shc (Transduction Labs). Immunoprecipitates were separated by SDS-PAGE. Immunoblots were developed using mab shc/p66-6E10 at 1µg/ml.

All products are supplied for research and investigational use only. Not for use in humans or laboratory animals.