

Mouse Monoclonal Antibody to

GSK3beta (phospho-Ser 9)

clone 2D3

Order No.: **0098-100/GSK3b-2D3**
 Size (µg) 100
 Lot No.: 0098S



www.nanotools.de

orders & support:

email: info@nanotools.de
 phone: +49-7641-455 670
 fax: +49-7641-455 671

05/060418F

Isotype	Species Reactivity	Applications	Mol. Weight	Ref.Cell Line	Epitope	Immunogen
IgG1	human, mouse	WB, ELISA	46 kDa	A431	R T T pS F A E (phosphoserine 9)	phosphopeptide conjugated to KLH

Background and Specificity:

Glycogen Synthase Kinase 3 beta (GSK3beta) is a serine/threonine kinase that is acting independently of most signal transduction pathways. The activity of GSK3beta can be modulated by phosphorylation of Ser 9 and Tyr 216 in the activation loop. GSK3beta plays a crucial role in phosphorylation of beta-catenin and thus is an important kinase involved in the regulation of beta-catenin/wnt-signaling.

Mab GSK3b-2D3 specifically recognizes GSK3beta phosphorylated at Ser 9 at 46 kDa in Western blot and ELISA applications. The antibody does not crossreact with GSK3alpha pSer21.

Related Products

mab to GSK3alpha
#0211-100/GSK3a-10C1

mab to GSK3alpha (phospho-Ser21)
#0158-100/GSK3a-9B8

mab to GSK3beta
#0135-100/GSK3b-11B9

mab to GSK3beta (phospho-Ser9)
#0185-100/GSK3b-3A8

mab to GSK3beta (phospho-Tyr215)
mab to GSK3alpha (phospho-Tyr278)
#0258-100/GSK3b-6D3

Purification: The antibody was purified from serum-free cell culture supernatant by subsequent thiophilic adsorption and size exclusion chromatography.

Formulation: liquid; 0.1mg/ml in in PBS/0.09% Na-Azide/PEG and Sucrose/50% Glycerol

Reconstitution:

Stability: Aliquote and store at -20°C up to 1 year.

Avoid repeated freeze / thaw cycles.

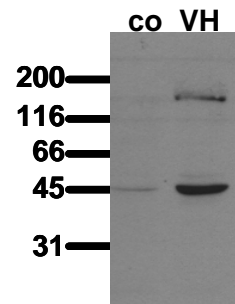
Positive Control: #0832: Cell lysate from pervanadate treated A431 cells.

Immunoblotting: 0.5 µg/ml for HRPO/ECL detection
Recommended blocking buffer: Casein/Tween 20 based blocking and blot incubation buffer, e.g. nanoTools product #3031-500/CPPT or #3031-3000/CPPT.

Immunoprecipitation: ND

Immunocytochemistry: ND

ELISA: use at 0.05 µg/ml



Phosphospecificity

Whole cell extracts of control (co) and pervanadate (VH) treated A431 tumor cells were applied to SDS-PAGE (ca 20.000 cells per lane) and transferred to PVDF membranes. Immunoblots were probed with mab GSK3b-2D3 (0.5 µg/ml) for 1h at RT and developed by ECL (exp. time: 30 sec).

All products are supplied for research and investigational use only. Not for use in humans or laboratory animals.