

## Mouse Monoclonal Antibody to

**CREB(phospho-Ser 133)/  
ATF1 (phospho-Ser 63)**

**clone 10E9**

**Order No.:** 0111-100/CREB/ATF1-10E9  
**Size (µg)** 100  
**Lot No.:** 0111S



[www.nanotools.de](http://www.nanotools.de)

**orders & support:**

email: [info@nanotools.de](mailto:info@nanotools.de)  
phone: +49-7641-455 670  
fax: +49-7641-455 671

02/160307F

Isotype	Species Reactivity	Applications	Mol. Weight	Ref.Cell Line	Epitope	Immunogen
IgG1	human, mouse, dog	WB, ELISA	CREB:43kDa ATF1:38kDa	HepG2	phosphoserine 133 ...R R P pS Y R K...	phosphopeptide conjugated to KLH

### Background and Specificity:

The transcription factor CREB activates transcription in response to a variety of extracellular signals. Various kinases, including Protein kinase A (PKA), and CaM kinase II, regulate CREB activity by phosphorylation of serine 133.

**Mab CREB/ATF1-10E9** specifically recognizes CREB phosphorylated at serine 133 and ATF1 phosphorylated at serine 63 in Western blot and ELISA applications.

**Purification:** The antibody was purified from serum-free cell culture supernatant by subsequent thiophilic adsorption and size exclusion chromatography.

**Formulation:** lyophilized from 1 ml 2 x PBS / 0.09 % Na-azide / PEG and Sucrose.

**Reconstitution:** Reconstitute with 1 ml H<sub>2</sub>O (15 min, RT).

**Stability:** For long-term storage, freeze lyophilizate upon arrival (-20°C). Upon reconstitution, aliquote and freeze in liquid nitrogen; reconstituted antibody can be stored frozen at -80°C up to 1 year. Thaw aliquots at 37°C. Thawed aliquots may be stored at 4°C up to 3 months.

**Avoid repeated freeze / thaw cycles.**

**Positive Control:** #0814: Cell lysate from Forskolin-treated HepG2 cells

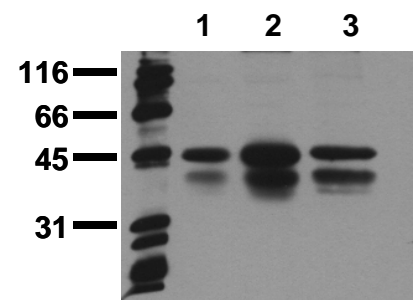
**Immunoblotting:** 0.5 µg/ml for HRPO/ECL detection  
**Recommended blocking buffer:** Casein/Tween 20 based blocking and blot incubation buffer, e.g. nanoTools product #3031-500/CPPT or #3031-3000/CPPT.

**Immunoprecipitation:** ND

**Immunocytochemistry:** ND

**ELISA:** use at 0.05 µg/ml

### Related Products



**Phosphospecificity**

Whole cell extracts of control (1), EGF stimulated (2) or pervanadate treated (3) A549 tumor cells were applied to SDS-PAGE (ca 20.000 cells per lane) and transferred to a PVDF membrane. The immunoblot was probed with mab CREB/ATF1-10E9 (0.5 µg/ml) for 1h at RT and developed by ECL (exp. time: 30 sec).

**All products are supplied for research and investigational use only. Not for use in humans or laboratory animals.**