

Mouse Monoclonal Antibody to

c-Raf

clone PBB-1

Order No.: 0120-100/c-Raf-PBB-1

Size (µg) 100

Lot No.: 0120S



www.nanotools.de

orders & support:

email: info@nanotools.de

phone: +49-7641-455 670

fax: +49-7641-455 671

02/160307F

Isotype	Species Reactivity	Applications	Mol. Weight	Ref.Cell Line	Epitope	Immunogen
IgG1	human	WB	74 kDa	none		c-Raf kinase domain

Background and Specificity:

The c-raf protein is an important kinase in the transmission of extracellular stimuli to the nucleus. Mitogenic stimulation of cells induces hyperphosphorylation of c-raf in multiple serine, threonine and tyrosine residues. Phosphorylation of serines 43, 259 and 621 has been implicated in the negative regulation of raf. Phosphorylation of serine 43 interferes with ras binding, serine 259 and serine 621 represent binding sites for the 14-3-3 proteins.

Mab c-raf-PBB-1 specifically recognizes c-raf in Western blot applications.

Related Products

mab to c-raf

#0102-100/c-raf-6B4

Purification: The antibody was purified from serum-free cell culture supernatant by subsequent thiophilic adsorption and size exclusion chromatography.

Formulation: liquid; 0.1mg/ml in in PBS/0.09% Na-Azide/PEG and Sucrose/50% Glycerol

Reconstitution:

Stability: Aliquote and store at -20°C up to 1 year.

Avoid repeated freeze / thaw cycles.

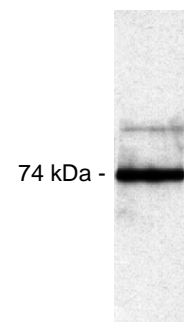
Positive Control: none

Immunoblotting: 0.5 µg/ml for HRPO/ECL detection
Recommended blocking buffer: Casein/Tween 20 based blocking and blot incubation buffer, e.g. nanoTools product #3031-500/CPPT or #3031-3000/CPPT.

Immunoprecipitation: ND

Immunocytochemistry: ND

ELISA: ND



Immunoblot Analysis

A431 cell lysate probed with mab C-Raf (PBB-1) at 0.1 microgram/ml.

All products are supplied for research and investigational use only. Not for use in humans or laboratory animals.