

Mouse Monoclonal Antibody to

GSK3beta (N-terminus)

clone 11B9

Order No.: 0135-100/GSK3b-11B9
Size (µg) 100
Lot No.: 0135S



www.nanotools.de

orders & support:

email: info@nanotools.de
 phone: +49-7641-455 670
 fax: +49-7641-455 671

02/220307F

Isotype	Species Reactivity	Applications	Mol. Weight	Ref.Cell Line	Epitope	Immunogen
IgG1	human, mouse, rat, dog	WB, ELISA	46 kDa	HepG2	N-terminal region of GSK3beta	peptide conjugated to KLH

Background and Specificity:

Glycogen Synthase Kinase 3 beta (GSK3beta) is a serine/threonine kinase that is acting independently of most signal transduction pathways. The activity of GSK3beta can be modulated by phosphorylation of Ser9 and Tyr215 in the activation loop. GSK3beta plays a crucial role in phosphorylation of beta-catenin and thus is an important kinase involved in the regulation of beta-catenin/wnt-signaling.

Mab GSK3b-11B9 specifically recognizes GSK3beta at 46 kDa in Western blot and ELISA applications and does not crossreact with GSK3alpha.

Related Products

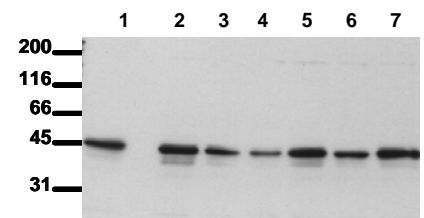
mab to GSK3alpha
#0211-100/GSK3a-10C1

mab to GSK3alpha (phospho-Ser21)
#0158-100/GSK3a-9B8

mab to GSK3beta (phospho-Ser9)
#0098-100/GSK3b-2D3
#0185-100/GSK3b-3A8

mab to GSK3beta (phospho-Tyr215)
mab to GSK3alpha (phospho-Tyr278)
#0258-100/GSK3b-6D3

Purification:	The antibody was purified from serum-free cell culture supernatant by subsequent thiophilic adsorption and size exclusion chromatography.
Formulation:	lyophilized from 1 ml 2 x PBS / 0.09 % Na-azide / PEG and Sucrose.
Reconstitution:	Reconstitute with 1 ml H ₂ O (15 min, RT).
Stability:	For long-term storage, freeze lyophilizate upon arrival (-20°C). Upon reconstitution, aliquote and freeze in liquid nitrogen; reconstituted antibody can be stored frozen at -80°C up to 1 year. Thaw aliquots at 37°C. Thawed aliquots may be stored at 4°C up to 3 months.
	Avoid repeated freeze / thaw cycles
Positive Control:	#0811: Cell lysate from untreated HepG2 cells.
Immunoblotting:	0.5 µg/ml for HRPO/ECL detection Recommended blocking buffer: Casein/Tween 20 based blocking and blot incubation buffer, e.g. nanoTools product #3031-500/CPPT or #3031-3000/CPPT.
Immunoprecipitation:	ND
Immunocytochemistry:	ND
ELISA:	use at 0.05 µg/ml



Detection of endogenous GSK3 beta
 Whole cell lysates of serum starved tumor cells (20.000 cells per lane) were applied to SDS-PAGE and transferred to PVDF membranes. Immunoblots were probed with mab GSK3-11B9 (0.5 µg/ ml) for 1h at RT and developed by ECL (exp. time: 30 sec).

lane 1: A431; lane 2: SW480; lane 3: SW620;
 lane 4: HT29; lane 5: MCF7; lane 6:
 MDA-MR-231; lane 7: T47D

All products are supplied for research and investigational use only. Not for use in humans or laboratory animals.