

## Mouse Monoclonal Antibody to

# GSK3beta (N-terminus)

## clone 11B9

**Order No.:** 0135-100/GSK3b-11B9  
**Size (µg)** 100  
**Lot No.:** 0135S



[www.nanotools.de](http://www.nanotools.de)

**orders & support:**

email: [info@nanotools.de](mailto:info@nanotools.de)  
 phone: +49-7641-455 670  
 fax: +49-7641-455 671

05/060418F

Isotype	Species Reactivity	Applications	Mol. Weight	Ref. Cell Line	Epitope	Immunogen
IgG1	human, mouse, rat, dog	WB, ELISA	46 kDa	HepG2	N-terminal region of GSK3beta	peptide conjugated to KLH

### Background and Specificity:

Glycogen Synthase Kinase 3 beta (GSK3beta) is a serine/threonine kinase that is acting independently of most signal transduction pathways. The activity of GSK3beta can be modulated by phosphorylation of Ser 9 and Tyr 216 in the activation loop. GSK3beta plays a crucial role in phosphorylation of beta-catenin and thus is an important kinase involved in the regulation of beta-catenin/wnt-signaling.

**Mab GSK3b-11B9** specifically recognizes GSK3beta at 46 kDa in Western blot and ELISA applications and does not crossreact with GSK3alpha.

### Related Products

**mab to GSK3alpha**  
#0211-100/GSK3a-10C1

**mab to GSK3alpha (phospho-Ser21)**  
#0158-100/GSK3a-9B8

**mab to GSK3beta (phospho-Ser9)**  
#0098-100/GSK3b-2D3  
#0185-100/GSK3b-3A8

**mab to GSK3beta (phospho-Tyr216)**  
**mab to GSK3alpha (phospho-Tyr279)**  
#0258-100/GSK3b-6D3

**Purification:** The antibody was purified from serum-free cell culture supernatant by subsequent thiophilic adsorption and size exclusion chromatography.

**Formulation:** lyophilized from 1 ml 2 x PBS / 0.09 % Na-azide / PEG and Sucrose.

**Reconstitution:** Reconstitute with 1 ml H<sub>2</sub>O (15 min, RT).

**Stability:** For long-term storage, freeze lyophilizate upon arrival (-20°C). Upon reconstitution, aliquote and freeze in liquid nitrogen; reconstituted antibody can be stored frozen at -80°C up to 1 year. Thaw aliquots at 37°C. Thawed aliquots may be stored at 4°C up to 3 months.

**Avoid repeated freeze / thaw cycles**

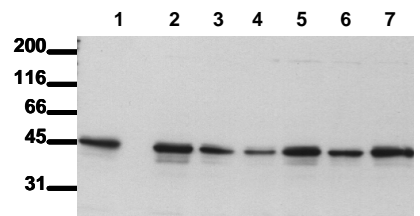
**Positive Control:** #0811: Cell lysate from untreated HepG2 cells.

**Immunoblotting:** 0.5 µg/ml for HRPO/ECL detection  
**Recommended blocking buffer:** Casein/Tween 20 based blocking and blot incubation buffer, e.g. nanoTools product #3031-500/CPPT or #3031-3000/CPPT.

**Immunoprecipitation:** ND

**Immunocytochemistry:** ND

**ELISA:** use at 0.05 µg/ml



### Detection of endogenous GSK3 beta

Whole cell lysates of serum starved tumor cells (20.000 cells per lane) were applied to SDS-PAGE and transferred to PVDF membranes. Immunoblots were probed with mab GSK3-11B9 (0.5 µg/ml) for 1h at RT and developed by ECL (exp. time: 30 sec).

lane 1: A431; lane 2: SW480; lane 3: SW620;  
 lane 4: HT29; lane 5: MCF7; lane 6:  
 MDA-MR-231; lane 7: T47D

**All products are supplied for research and investigational use only. Not for use in humans or laboratory animals.**