

Mouse Monoclonal Antibody to

**bcl-10 (phospho-Ser 138)**

**clone 6D3**

**Order No.:** 0137-100/bcl10-6D3  
**Size (µg)** 100  
**Lot No.:** 0137S



[www.nanotools.de](http://www.nanotools.de)

**orders & support:**

email: [info@nanotools.de](mailto:info@nanotools.de)  
 phone: +49-7641-455 670  
 fax: +49-7641-455 671

01/050307F

Isotype	Species Reactivity	Applications	Mol. Weight	Ref.Cell Line	Epitope	Immunogen
IgG1	human	WB	32 kDa	SW480	Phosphoserine 138	phosphopeptide conjugated to KLH

**Background and Specificity:**

Bcl-10 is an apoptosis-inducing molecule interacting with caspase 9. Bcl-10 enhances pro-caspase 9 processing and induces apoptosis through caspase 9 activation.

**Mab bcl10-6D3** specifically recognizes bcl-10 phosphorylated at serine 138 at 32 kDa in Western blot.

**Related Products**

**Purification:** The antibody was purified from serum-free cell culture supernatant by subsequent thiophilic adsorption and size exclusion chromatography

**Formulation:** lyophilized from 1 ml 2 x PBS / 0.09 % Na-azide / PEG and Sucrose.

**Reconstitution:** Reconstitute with 1 ml H<sub>2</sub>O (15 min, RT).

**Stability:** For long-term storage, freeze lyophilizate upon arrival (-20°C). Upon reconstitution, aliquote and freeze in liquid nitrogen; reconstituted antibody can be stored frozen at -80°C up to 1 year. Thaw aliquots at 37°C. Thawed aliquots may be stored at 4°C up to 3 months.

**Avoid repeated freeze / thaw cycles.**

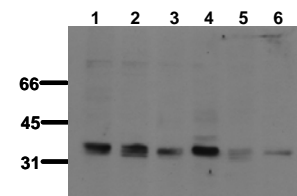
**Positive Control:** #0801: Cell lysate from untreated SW480 cells.

**Immunoblotting:** 0.5 µg/ml for HRPO/ECL detection  
**Recommended blocking buffer:** BSA/Tween 20 based blocking and blot incubation buffer.

**Immunoprecipitation:** ND

**Immunocytochemistry:** ND

**ELISA:** ND



**Detection of endogenous bcl-10**

Whole cell lysates of serum starved tumor cells (20.000 cells per lane) were applied to SDS-PAGE and transferred to PVDF membranes. Immunoblots were probed with mab 6D3 (0.5 µg/ ml) for 1h at RT and developed by ECL (exp. time: 30 sec).  
 lane 1: SW480; lane 2: SW620; lane 3: HT29;  
 lane 4: MCF-7; lane 5: MDA-MB-231; lane 6: T47D

**All products are supplied for research and investigational use only. Not for use in humans or laboratory animals.**