

Mouse Monoclonal Antibody to

PKC theta clone 1C2

Order No.: 0149-100/PKCtheta-1C2
Size (µg) 100
Lot No.: 0149S



www.nanotools.de

orders & support:

email: info@nanotools.de
phone: +49-7641-455 670
fax: +49-7641-455 671

01/300307F

Isotype	Species Reactivity	Applications	Mol. Weight	Ref.Cell Line	Epitope	Immunogen
IgG1	human, rat	WB	79 kDa	MCF-7	peptide derived from the C terminal domain of PKC theta	peptide conjugated to hemocyanin

Background and Specificity:

The protein kinase C family of Ser/Thr kinases consists of 11 isoenzymes. PKC theta is a member of the novel PKC (nPKC) subfamily. PKC theta is expressed in most tissues.

Related Products

Purification: The antibody was purified from serum-free cell culture supernatant by subsequent ultrafiltration and size exclusion chromatography.

Formulation: lyophilized from 1 ml PBS / 0.09 % Na-azide / PEG and Sucrose

Reconstitution: Reconstitute with 1 ml H₂O (15 min, RT).

Stability: For long-term storage, freeze lyophilizate upon arrival (-20°C). Upon reconstitution, aliquote and freeze in liquid nitrogen; reconstituted antibody can be stored frozen at -80°C up to 1 year. Thaw aliquots at 37°C. Thawed aliquots may be stored at 4°C up to 3 months.

Avoid repeated freeze / thaw cycles.

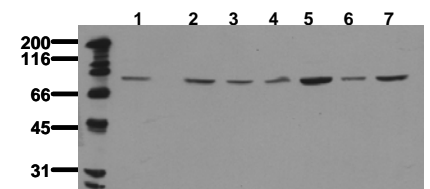
Positive Control: #0881: Cell lysate from untreated MCF-7 cells.

Immunoblotting: 0.5 µg/ml for HRPO/ECL detection
Recommended blocking buffer: Casein/Tween 20 based blocking and blot incubation buffer, e.g. nanoTools product #3031-500/CPPT or #3031-3000/CPPT.

Immunoprecipitation: ND

Immunocytochemistry: ND

ELISA: ND



Detection of endogenous PKC theta
Whole cell lysates of serum starved tumor cells (20.000 cells per lane) were applied to SDS-PAGE and transferred to PVDF membranes. Immunoblots were probed with mab PKCtheta 1C2 (0.5 µg/ ml) for 1h at RT and developed by ECL (exp. time: 30 sec).
lane 1: A431; lane 2: SW480; lane 3: SW620; lane 4: HT29; lane 5: MCF-7; lane 6: MDA-MB-231; lane 7: T47D

All products are supplied for research and investigational use only. Not for use in humans or laboratory animals.