

Mouse Monoclonal Antibody to

MEK1/2 (activation loop)

clone 9G3

Order No.: 0150-100/MEK1/2-9G3
Size (µg) 100
Lot No.: 0150S



www.nanotools.de

orders & support:

email: info@nanotools.de
 phone: +49-7641-455 670
 fax: +49-7641-455 671

04/150307F

Isotype	Species Reactivity	Applications	Mol. Weight	Ref.Cell Line	Epitope	Immunogen
IgG2a	human, mouse, rat, dog	WB, ELISA	45 kDa	HepG2	activation loop (phosphorylation independent)	peptide conjugated to KLH

Background and Specificity:

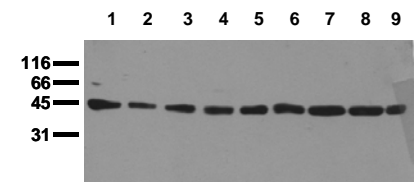
MEK (MAP Kinase Kinase) phosphorylates the MAP Kinase on both threonine and tyrosine residues of the activation motif TEY. MEK1 and MEK2 are activated by phosphorylation of two serine residues (Ser 218/222 in MEK1 and Ser 222/226 in MEK2). These phosphorylation sites are substrates of the Raf family of kinases.

Mab MEK1/2-9G3 specifically recognizes the activation loop of MEK1/2 independent of its phosphorylation status. The antibody is suitable for Western Blot and ELISA applications.

Related Products

- mab to MEK1 (pS218/222)**
- mab to MEK2 (pS222/226)**
#0174-100/MEK1/2-7E10
- mab to MEK1 (N-terminus)**
#0186-100/MEK1-10B1
- mab to MEK2 (N-terminus)**
#0148-100/MEK2-8E8
- mab to MKK3 (N-terminus)**
#0166-100/MKK3-5F7
- mab to MKK5 (N-terminus)**
#0224-100/MKK5-14B5
- mab to MKK7 (N-terminus)**
#0189-100/MKK7-10F7
- mab to MAPK 1/2 (pT-E-pY)**
#0012-100/MAPK-12D4
- mab to MAPK 2 (C-terminus)**
#0011-100/MAPK-6G11
- mab to MAPK 2 (N-terminus)**
#0178-100/MAPK-6H3
- mab to MAPK 2 (internal sequence)**
#0239-100/MAPK2-12A4
- mab to MAPK 7/erk 5**
#0223-100/MAPK7/erk5-12F2
- mab to Fos (pS374)**
#0118-100/Fos-34E4
- mab to Fos (N-terminus)**
#0122-100/Fos-8B5
- mab to C-Raf (pS621)**
#0102-100/C-Raf-6B4
- mab to C-Raf**
#0120-100/C-Raf-PBB-1

Purification:	The antibody was purified from serum-free cell culture supernatant by subsequent thiophilic adsorption and size exclusion chromatography
Formulation:	lyophilized from 1 ml PBS / 0.09 % Na-azide / PEG and Sucrose.
Reconstitution:	Reconstitute with 1 ml H ₂ O (15 min, RT)
Stability:	For long-term storage, freeze lyophilizate upon arrival (-20°C). Upon reconstitution, aliquote and freeze in liquid nitrogen; reconstituted antibody can be stored frozen at -80°C up to 1 year. Thaw aliquots at 37°C. Thawed aliquots may be stored at 4°C up to 3 months. Avoid repeated freeze / thaw cycles.
Positive Control:	#0811: Cell lysate from untreated HepG2 cells
Immunoblotting:	0.5 µg/ml for HRPO/ECL detection Recommended blocking buffer: Casein/Tween 20 based blocking and blot incubation buffer, e.g. nanoTools product #3031-500/CPPT or #3031-3000/CPPT.
Immunoprecipitation:	ND
Immunocytochemistry:	ND
ELISA:	0.1 µg/ml (protein ELISA); capture ELISA: N.D.



Detection of endogenous MEK1/2

Whole cell lysates of serum starved tumor cells (20.000 cells per lane) were applied to SDS-PAGE and transferred to a PVDF membrane. The immunoblot was probed with mab MEK1/2-9G3 (0.5 µg/ml) for 1h at RT and developed by ECL (exp. time: 30 sec).

lane 1: HeLa; lane 2: HepG2; lane 3: HEK293; lane 4: SH-SY5Y; lane 5: MDCK; lane 6: PC12; lane 7: CMT 93; lane 8: Neuro 2A; lane 9: 3T3

All products are supplied for research and investigational use only. Not for use in humans or laboratory animals.