

Mouse Monoclonal Antibody to

GSK3alpha (phospho-Ser 21)

clone 9B8

Order No.: 0158-100/GSK3a-9B8

Size (µg) 100

Lot No.: 0158S

www.nanotools.de

orders & support:

email: info@nanotools.de

phone: +49-7641-455 670

fax: +49-7641-455 671

02/220307F

Isotype	Species Reactivity	Applications	Mol. Weight	Ref. Cell Line	Epitope	Immunogen
IgG1	human, mouse, rat, dog	WB, ELISA	51 kDa	HepG2	R T S p S F A E (phosphoserine 21)	phosphopeptide conjugated to KLH

Background and Specificity:

Glycogen Synthase Kinase 3 (GSK3) exists in two isoforms, alpha and beta (GSK3alpha, GSK3beta). GSK3 is an active kinase that becomes phosphorylated by PKB/akt upon growth factor stimulation. Phosphorylation of GSK3alpha at serine 21 or GSK3beta at serine 9, respectively, leads to inhibition of kinase activity of the GSK3.

Mab GSK3a-9B8 specifically recognizes GSK3alpha phosphorylated at serine 21 (Western blot: 51 kDa) but does not crossreact with the homologous phosphorylation site in GSK3beta (phospho-Ser 9).

Related Products

mab to GSK3alpha
#0211-100/GSK3a-10C1

mab to GSK3beta
#0135-100/GSK3b-11B9

mab to GSK3beta (phospho-Ser9)
#0098-100/GSK3b-2D3
#0185-100/GSK3b-3A8

mab to GSK3beta (phospho-Tyr215)
mab to GSK3alpha (phospho-Tyr278)
#0258-100/GSK3b-6D3

Purification:	The antibody was purified from serum-free cell culture supernatant by subsequent thiophilic adsorption and size exclusion chromatography.
Formulation:	lyophilized from 1 ml 2 x PBS / 0.09 % Na-azide / PEG and Sucrose.
Reconstitution:	Reconstitute with 1 ml H ₂ O (15 min, RT).
Stability:	For long-term storage, freeze lyophilizate upon arrival (-20°C). Upon reconstitution, aliquote and freeze in liquid nitrogen; reconstituted antibody can be stored frozen at -80°C up to 1 year. Thaw aliquots at 37°C. Thawed aliquots may be stored at 4°C up to 3 months.

Avoid repeated freeze / thaw cycles

Positive Control: #0812: Cell lysate from pervanadate treated HepG2 cells.

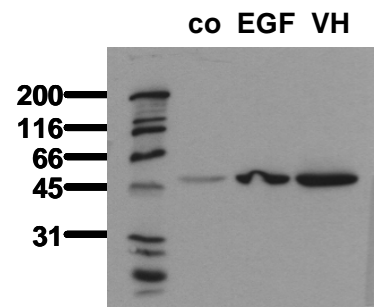
Immunoblotting: 0.5 µg/ml for HRPO/ECL detection
Recommended blocking buffer: Casein/Tween 20 based blocking and blot incubation buffer, e.g. nanoTools product #3031-500/CPPT or #3031-3000/CPPT.

Immunoprecipitation: ND

Immunocytochemistry: ND

ELISA: use at 0.0 5µg/ml

All products are supplied for research and investigational use only. Not for use in humans or laboratory animals.



Phosphospecificity

Whole cell extracts of control (co), EGF stimulated (EGF) or pervanadate treated (VH) A431 tumor cells were applied to SDS-PAGE (ca 20.000 cells per lane) and transferred to PVDF membranes. Immunoblots were probed with mab GSK-9B8 (0.5 µg/ ml) for 1h at RT and developed by ECL (exp. time: 30 sec).