

Mouse Monoclonal Antibody to

src (N-terminus)

clone 11F1

Order No.: 0170-100/src-11F1

Size (µg) 100

Lot No.: 0170S

www.nanotools.de

orders & support:

email: info@nanotools.de

phone: +49-7641-455 670

fax: +49-7641-455 671

02/160307F

Isotype	Species Reactivity	Applications	Mol. Weight	Ref. Cell Line	Epitope	Immunogen
IgG1	human, mouse, rat, dog	WB, ELISA	60 kDa	A431	N-terminus	peptide conjugated to hemocyanin

Background and Specificity:

Src is the best understood member of a family of 9 tyrosine kinases regulating cellular responses to extracellular stimuli. Src is activated by PDGF and other growth factors that activate transmembrane tyrosine kinase receptors as well as increased intracellular calcium or oxidative stress. Src becomes activated upon dephosphorylation of Tyr 527, leading to a conformational change of the src molecule towards an "open", active conformation which allows binding to other proteins via the SH2 and SH3 domain. Activated src phosphorylates a variety of substrates involved in the mitogenic signalling pathway, cytoskeletal organization, cell-substrate adhesion, cell-cell adhesion, cell-cell communication, and RNA processing.

Mab src-11F1 specifically recognizes the N-terminus of src in Western blot at 60 kDa.

Related Products

mab to src (phospho-Tyr 416)

#0080-100/src-9A6

mab to yes (N-terminus)

#0169-100/yes-2B8

Purification:	The antibody was purified from serum-free cell culture supernatant by subsequent thiophilic adsorption and size exclusion chromatography.
Formulation:	lyophilized from 1 ml 2 x PBS / 0.09 % Na-azide / PEG and Sucrose.
Reconstitution:	Reconstitute with 1 ml H ₂ O (15 min, RT).
Stability:	For long-term storage, freeze lyophilizate upon arrival (-20°C). Upon reconstitution, aliquote and freeze in liquid nitrogen; reconstituted antibody can be stored frozen at -80°C up to 1 year. Thaw aliquots at 37°C. Thawed aliquots may be stored at 4°C up to 3 months.

Avoid repeated freeze / thaw cycles.

Positive Control: #0831: Cell lysate from untreated A431 cells

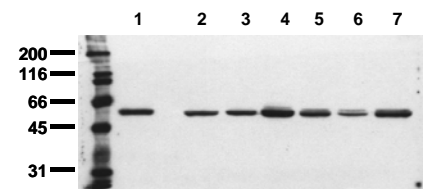
Immunoblotting: 0.5 µg/ml for HRPO/ECL detection
Recommended blocking buffer: Casein/Tween 20 based blocking and blot incubation buffer, e.g. nanoTools product #3031-500/CPPT or #3031-3000/CPPT.

Immunoprecipitation: ND

Immunocytochemistry: ND

ELISA: use at 0.05 µg/ml

All products are supplied for research and investigational use only. Not for use in humans or laboratory animals.



Detection of endogenous src

Whole cell extracts of vanadate treated tumor cells (20.000 cells per lane) were applied to SDS-PAGE and transferred to a PVDF membrane. The immunoblot was probed with mab src-11F1 (0.5 µg/ ml) for 1h at RT and developed by ECL (exp. time: 30 sec). lane 1: A431; lane 2: SW480; lane 3: SW620; lane 4: HT29; lane 5: MCF-7; lane 6: MDA-MB231; lane 7: T47D