

## Mouse Monoclonal Antibody to

# MEK1(pS 218/222) / MEK2 (pS 222/226)

## clone 7E10

**Order No.:** 0174-100/MEK1/2-7E10  
**Size (µg)** 100  
**Lot No.:** 0174S



[www.nanotools.de](http://www.nanotools.de)

**orders & support:**

email: [info@nanotools.de](mailto:info@nanotools.de)  
 phone: +49-7641-455 670  
 fax: +49-7641-455 671

04/150307F

Isotype	Species Reactivity	Applications	Mol. Weight	Ref.Cell Line	Epitope	Immunogen
IgG1	human, mouse, dog	WB, ELISA	45 kDa	SW480	pSer 218/222 in MEK1 pSer 222/226 in MEK2  ... D - pS - M - A - N - pS - F...	phosphopeptide conjugated to KLH

### Background and Specificity:

MEK (MAP Kinase Kinase) phosphorylates the MAP Kinase 1 and 2 on both threonine and tyrosine residues of the activation loop motif **TEY**. MEK1 and MEK2 are activated by phosphorylation of two serine residues (Ser 218/222 in MEK1 and Ser 222/226 in MEK2). These phosphorylation sites are substrates of the Raf family of kinases.

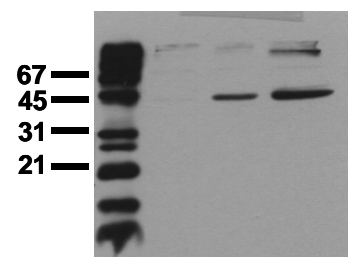
**Mab MEK1/2-7E10** specifically recognizes MEK1 phosphorylated at serine 218/222 and MEK2 phosphorylated at serine 222/226 at 45 kDa. The antibody is suitable for Western Blot and ELISA applications.

### Related Products

- mab to MAPK 1/2 (pT-E-pY)**  
#0012-100/MAPK-12D4
- mab to MAPK 2 (C-terminus)**  
#0011-100/MAPK2-6G11
- mab to MAPK 2 (N-terminus)**  
#0178-100/MAPK2-6H3
- mab to MAPK7/erk5**  
#0223-100/MAPK7/erk5-12F2
- mab to MEK1 (N-terminus)**  
#0186-100/MEK1-10B1
- mab to MEK1/2**  
#0150-100/MEK1/2-9G3
- mab to MEK2 (N-terminus)**  
#0148-100/MEK2-8E8
- mab to MKK3 (N-terminus)**  
#0166-100/MKK3-5F7
- mab to MKK5 (N-terminus)**  
#0224-100/MKK5-14B5
- mab to MKK7 (N-terminus)**  
#0189-100/MKK7-10F7
- mab to Fos (pS374)**  
#0118-100/Fos-34E4
- mab to Fos (N-terminus)**  
#0122-100/Fos-8B5
- mab to C-Raf (pS621)**  
#0102-100/C-Raf-6B4
- mab to C-Raf**  
#0120-100/C-Raf-PBB-1

<b>Purification:</b>	The antibody was purified from serum-free cell culture supernatant by subsequent thiophilic adsorption and size exclusion chromatography
<b>Formulation:</b>	lyophilized from 1 ml PBS / 0.09 % Na-azide / PEG and Sucrose.
<b>Reconstitution:</b>	Reconstitute with 1 ml H <sub>2</sub> O (15 min, RT)
<b>Stability:</b>	For long-term storage, freeze lyophilizate upon arrival (-20°C). Upon reconstitution, aliquote and freeze in liquid nitrogen; reconstituted antibody can be stored frozen at -80°C up to 1 year. Thaw aliquots at 37°C. Thawed aliquots may be stored at 4°C up to 3 months.  <b>Avoid repeated freeze / thaw cycles.</b>
<b>Positive Control:</b>	#0802: Cell lysate from pervanadate-treated SW480 cells
<b>Immunoblotting:</b>	0.5 µg/ml for HRPO/ECL detection <b>Recommended blocking buffer:</b> Casein/Tween 20 based blocking and blot incubation buffer, e.g. nanoTools product #3031-500/CPPT or #3031-3000/CPPT.
<b>Immunoprecipitation:</b>	ND
<b>Immunocytochemistry:</b>	ND
<b>ELISA:</b>	0.1 µg/ml (protein ELISA); capture ELISA: N.D.

co EGF VH



### Phosphospecificity

Whole cell extracts of control (co), EGF stimulated (EGF) or pervanadate treated (VH) A549 tumor cells were applied to SDS-PAGE (ca 20.000 cells per lane) and transferred to a PVDF membrane. The immunoblot was probed with mab MEK1/2-7E10 (0.5 µg/ml) for 1h at RT and developed by ECL (exp. time: 30 sec).

**All products are supplied for research and investigational use only. Not for use in humans or laboratory animals.**