

Mouse Monoclonal Antibody to

MAPK2/erk2 (N-terminus)

clone 6H3

Order No.: 0178-100/MAPK2-6H3
Size (µg) 100
Lot No.: 0178S



www.nanotools.de

orders & support:

email: info@nanotools.de
 phone: +49-7641-455 670
 fax: +49-7641-455 671

03/150307F

Isotype	Species Reactivity	Applications	Mol. Weight	Ref.Cell Line	Epitope	Immunogen
IgG1	human, mouse, rat, dog	WB, ELISA	42 kDa	HepG2	N-terminus	peptide conjugated to hemocyanin

Background and Specificity:

Extracellular signal/mitogen activated protein kinases (erk/MAPK) are a group of proline-directed serine/threonine kinases that are activated by dual phosphorylation of conserved threonine and tyrosine residues within a characteristic **T X Y** peptide motif. The mitogen-activated kinases erk1 (MAPK1) and erk2 (MAPK2) acquire full enzymatic activity upon phosphorylation of both threonine and tyrosine residues within the sequence motif **T E Y**.

Mab MAPK2-6H3 specifically recognizes the N-terminus of MAP kinase 2 (erk2).

Related Products

- mab to MEK1 (pS218/222)**
- mab to MEK2 (pS222/226)**
- #0174-100/MEK1/2-7E10
- mab to MEK1 (N-terminus)**
- #0186-100/MEK1.10B1
- mab to MEK1/2**
- #0150-100/MEK1/2-9G3
- mab to MEK2 (N-terminus)**
- #0148-100/MEK2-8E8
- mab to MKK3 (N-terminus)**
- #0166-100/MKK3-5F7
- mab to MKK5 (N-terminus)**
- #0224-100/MKK5-14B5
- mab to MKK7 (N-terminus)**
- #0189-100/MKK7-10F7
- mab to MAPK 1/2 (pT-E-pY)**
- #0012-100/MAPK-12D4
- mab to MAPK 2 (C-terminus)**
- #0011-100/MAPK-6G11
- mab to MAPK 2 (internal sequence)**
- #0239-100/MAPK2-12A4
- mab to MAPK7/erk5**
- #0223-100/MAPk7/erk5-12F2
- mab to Fos (pS374)**
- #0118-100/Fos-34E4
- mab to Fos (N-terminus)**
- #0122-100/Fos-8B5
- mab to C-Raf (pS621)**
- #0102-100/C-Raf-6B4
- mab to C-Raf**
- #0120-100/C-Raf-PBB-1

Purification: The antibody was purified from serum-free cell culture supernatant by subsequent thiophilic adsorption and size exclusion chromatography.

Formulation: lyophilized from 1 ml 2 x PBS / 0.09 % Na-azide / PEG and Sucrose.

Reconstitution: Reconstitute with 1 ml H₂O (15 min, RT).

Stability: For long-term storage, freeze lyophilizate upon arrival (-20°C). Upon reconstitution, aliquote and freeze in liquid nitrogen; reconstituted antibody can be stored frozen at -80°C up to 1 year. Thaw aliquots at 37°C. Thawed aliquots may be stored at 4°C up to 3 months.

Avoid repeated freeze / thaw cycles.

Positive Control: #0811: Cell lysate from untreated HepG2 cells

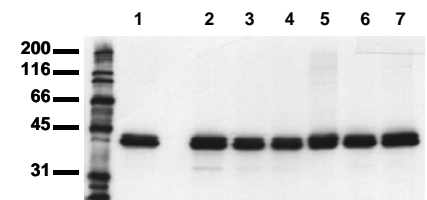
Immunoblotting: 0.5 µg/ml for HRPO/ECL detection
Recommended blocking buffer: Casein/Tween 20 based blocking and blot incubation buffer, e.g. nanoTools product #3031-500/CPPT or #3031-3000/CPPT.

Immunoprecipitation: ND

Immunocytochemistry: ND

ELISA: use at 0.05 µg/ml

All products are supplied for research and investigational use only. Not for use in humans or laboratory animals.



Detection of endogenous MAPK2

Whole cell lysates of serum starved tumor cells (20.000 cells per lane) were applied to SDS-PAGE and transferred to a PVDF membrane. The immunoblot was probed with mab MAPK2-6H3 (0.5 µg/ ml) for 1h at RT and developed by ECL (exp. time: 30 sec).

lane 1: A431; lane 2: SW620; lane 3: SW620; lane 4: HT29; lane 5: MCF7; lane 6: MDA231; lane 7: T47D