

Mouse Monoclonal Antibody to

GSK3beta (phospho-Ser 9)

clone 3A8

Order No.: 0185-100/GSK3b-3A8
Size (µg) 100
Lot No.: 0185S



www.nanotools.de

orders & support:

email: info@nanotools.de
 phone: +49-7641-455 670
 fax: +49-7641-455 671

02/220307F

Isotype	Species Reactivity	Applications	Mol. Weight	Ref.Cell Line	Epitope	Immunogen
IgG1	human, mouse, rat, dog	WB, ELISA	46 kDa	HepG2	R T T p S F A E (phosphoserine 9)	phosphopeptide conjugated to KLH

Background and Specificity:

Glycogen Synthase Kinase 3 beta (GSK3beta) is a serine/threonine kinase that is acting independently of most signal transduction pathways. The activity of GSK3beta can be modulated by phosphorylation of Ser9 and Tyr215 in the activation loop. GSK3beta plays a crucial role in phosphorylation of beta-catenin and thus is an important kinase involved in the regulation of beta-catenin/wnt-signaling.

Mab GSK3b-3A8 specifically recognizes GSK3beta phosphorylated at Ser 9 at 46 kDa in Western blot and ELISA applications.

Related Products

- mab to GSK3alpha**
#0211-100/GSK3a-10C1
- mab to GSK3alpha (phospho-Ser21)**
#0158-100/GSK3a-9B8
- mab to GSK3beta**
#0135-100/GSK3b-11B9
- mab to GSK3beta (phospho-Ser9)**
#0098-100/GSK3b-2D3
- mab to GSK3beta (phospho-Tyr215)**
- mab to GSK3alpha (phospho-Tyr278)**
#0258-100/GSK3b-6D3

Purification: The antibody was purified from serum-free cell culture supernatant by subsequent thiophilic adsorption and size exclusion chromatography.

Formulation: lyophilized from 1 ml 2 x PBS / 0.09 % Na-azide / PEG and Sucrose.

Reconstitution: Reconstitute with 1 ml H₂O (15 min, RT).

Stability: For long term storage, freeze lyophilisate upon arrival (-20°C): Aliquote and freeze in liquid nitrogen; reconstituted antibody can be stored frozen at -80°C up to 1 year. Thaw aliquots at 37°C. Thawed aliquots may be stored at 4°C up to 3 months.

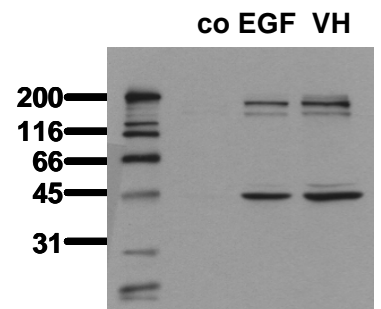
Avoid repeated freeze / thaw cycles.

Positive Control: #0812: Cell lysate from pervanadate treated HepG2 cells.

Immunoblotting: 0.5 µg/ml for HRPO/ECL detection
Recommended blocking buffer: Casein/Tween 20 based blocking and blot incubation buffer, e.g. nanoTools product #3031-500/CPPT or #3031-3000/CPPT.

Immunoprecipitation: ND
Immunocytochemistry: ND

ELISA: use at 0.05 µg/ml



Phosphospecificity
 Whole cell extracts of control (co), EGF stimulated (EGF) or pervanadate treated (VH) A431 tumor cells were applied to SDS-PAGE (ca 20.000 cells per lane) and transferred to PVDF membranes. Immunoblots were probed with mab GSK-3A8 (0.5 µg/ ml) for 1h at RT and developed by ECL (exp. time: 30 sec).

All products are supplied for research and investigational use only. Not for use in humans or laboratory animals.