

Mouse Monoclonal Antibody to

EGFR (phospho-Tyr 1068)

clone 15A2

Order No.: 0187-100/EGFR-15A2
Size (µg) 100
Lot No.: 0187S



www.nanotools.de

orders & support:

email: info@nanotools.de
phone: +49-7641-455 670
fax: +49-7641-455 671

03/260207F

Isotype	Species Reactivity	Applications	Mol. Weight	Ref. Cell Line	Epitope	Immunogen
IgG1	human, mouse, rat, dog	ELISA, WB, IP, Luminex	180 kDa	HepG2	Phosphotyrosine 1068 V P E pY I N Q	phosphopeptide conjugated to hemocyanin

Background and Specificity:

EGFR/erbB receptors are activated upon binding of EGF and EGF-related growth factors such as TGF alpha, beta-cellulin, Hb-EGF, HRG, or NRG. Binding of these ligands leads to receptor homo- and heterodimerization followed by autophosphorylation and activation of downstream signal transduction pathways (MAPK, PI3K/PKB, and STAT). In addition, EGFR becomes fully activated after phosphorylation of Y845 by src family kinases.

Phosphorylation of Y1045 leads to association with cbl and subsequent receptor degradation.

Phosphorylation of S1047 by CamKinase II leads to attenuation of kinase activity; phosphorylation of T654 (by PKC) and T669 (by MAPK, p38) interferes with receptor endocytosis/recycling.

Mab EGFR-15A2 specifically recognizes EGFR phosphorylated at Tyrosine 1068. The antibody is suitable for Western Blot and ELISA applications. Mab 15A2 does not crossreact with the highly homologous pTyr 1139 of activated erbB2.

Related Products

Blocking peptide for mab EGFR-15A2

- #2005-100/EGFR pTyr1068
- mab to EGFR (C-terminus)**
- #0007-100/EGFR-13G8
- mab to EGFR (cytoplasmic domain)**
- #0168-100/EGFR-10F4
- mab to EGFR (extracellular domain)**
- #0209-100/EGFR-20E12
- mab to EGFR (aa 960 - 980)**
- #0199-100/EGFR-16F8
- mab to EGFR (N-terminus)**
- #0201-100/EGFR-14C8
- mab to phospho-EGFR (pY 845)**
- #0116-100/EGFR-12A3
- mab to phospho-EGFR (pY1045)**
- #0136-100/EGFR-11C2
- mab to phospho-EGFR (pY 1086)**
- #0188-100/EGFR-8B8
- mab to phospho-EGFR (pY 1148)**
- #0219-100/EGFR-10G12
- mab to phospho-EGFR (pY1173)**
- #0008-100/EGFR-9H2
- mab to dephospho-EGFR (Y1173)**
- #0009-100/EGFR-20G3
- mab to phospho-EGFR (pT669)**
- #0191-100/EGFR-5F10
- mab to phospho-EGFR (pT654)**
- #0138-100/EGFR-3F2
- mab to phospho-EGFR (pS1047)**
- #0107-100/EGFR-1H9

For monoclonal antibodies against erbB2, phospho-erbB2, erbB3 and erbB4, as well as against various EGFR downstream targets, please refer to our website at www.nanotools.de

Purification: The antibody was purified from serum-free cell culture supernatant by subsequent ultrafiltration and size exclusion chromatography.

Formulation: lyophilized from 1 ml PBS / 0.09 % Na-azide / PEG and Sucrose.

Reconstitution: Reconstitute with 1 ml H₂O (15 min, RT).

Stability: For long-term storage, freeze lyophilizate upon arrival (-20°C). Upon reconstitution, aliquote and freeze in liquid nitrogen; reconstituted antibody can be stored frozen at -80°C up to 1 year. Thaw aliquots at 37°C. Thawed aliquots may be stored at 4°C up to 3 months.

Avoid repeated freeze / thaw cycles.

Positive Control: #0812: Cell lysate from pervanadate-treated HepG2 cells

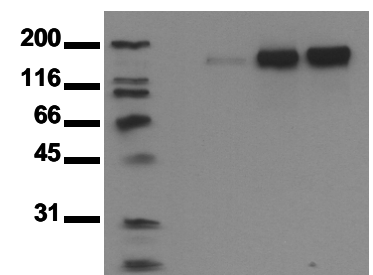
Immunoblotting: 1 µg/ml for HRPO/ECL detection
Recommended blocking buffer: Casein/Tween 20 based blocking and blot incubation buffer, e.g. nanoTools product #3031-500/CPPT or #3031-3000/CPPT.

Immunoprecipitation: use at 1 - 10 µg per 10⁶ pervanadate-treated A431 cells

Immunocytochemistry ND

ELISA: 0.1 µg/ml (protein ELISA); capture ELISA: N.D.

co EGF VH



Phosphospecificity

Whole cell extracts of control (co), EGF stimulated (EGF) or pervanadate treated (VH) SKOV3 tumor cells were applied to SDS-PAGE (ca 20.000 cells per lane) and transferred to a PVDF membrane. The immunoblot was probed with mab EGFR-15A2 (0.5 µg/ml) for 1h at RT and developed by ECL (exp. time: 30 sec).

All products are supplied for research and investigational use only. Not for use in humans or laboratory animals.