

Mouse Monoclonal Antibody to

EGFR (phospho-Tyr 1086)

clone 8B8

Order No.: 0188-100/EGFR-8B8

Size (µg) 100

Lot No.: 0188S

www.nanotools.de

orders & support:

email: info@nanotools.de

phone: +49-7641-455 670

fax: +49-7641-455 671

04/110708F

Isotype	Species Reactivity	Applications	Mol. Weight	Ref. Cell Line	Epitope	Immunogen
IgG2a	human	WB, ELISA	180 kDa	A431	phosphotyrosine 1086 N P V pY H N Q	synthetic phosphopeptide conjugated to hemocyanin

Background and Specificity:

EGFR/erbB receptors are activated upon binding of EGF and EGF-related growth factors such as TGF alpha, beta-cellulin, Hb-EGF, HRG, or NRG. Binding of these ligands leads to receptor homo- and heterodimerization followed by autophosphorylation and activation of downstream signal transduction pathways (MAPK, PI3K/PKB, and STAT). In addition, EGFR becomes fully activated after phosphorylation of Y845 by src family kinases.

Phosphorylation of Y1045 leads to association with cbl and subsequent receptor degradation.

Phosphorylation of S1047 by CamKinase II leads to attenuation of kinase activity; phosphorylation of T654 (by PKC) and T669 (by MAPK, p38) interferes with receptor endocytosis/recycling.

Mab EGFR-8B8 specifically recognizes EGFR phosphorylated at Tyrosine 1086. The antibody does not interact with the non-phosphorylated EGFR nor with unrelated Tyrosine-phosphorylated proteins.

Related Products

mab to EGFR (C-terminus)

#0007-100/EGFR-13G8

mab to EGFR (cytoplasmic domain)

#0168-100/EGFR-10F4

mab to EGFR (extracellular domain)

#0209-100/EGFR-20E12

mab to EGFR (aa 960 - 980)

#0199-100/EGFR-16F8

mab to EGFR (N-terminus)

#0201-100/EGFR-14C8

mab to phospho-EGFR (pY 845)

#0116-100/EGFR-12A3

mab to phospho-EGFR (pY1045)

#0136-100/EGFR-11C2

mab to phospho-EGFR (pY1068)

#0187-100/EGFR-15A2

mab to phospho-EGFR (pY 1148)

#0219-100/EGFR-10G12

mab to phospho-EGFR (pY1173)

#0008-100/EGFR-9H2

mab to dephospho-EGFR (Y1173)

#0009-100/EGFR-20G3

mab to phospho-EGFR (pT669)

#0191-100/EGFR-5F10

mab to phospho-EGFR (pT654)

#0138-100/EGFR-3F2

mab to phospho-EGFR (pS1047)

#0107-100/EGFR-1H9

For monoclonal antibodies against erbB2, phospho-erbB2, erbB3 and erbB4, as well as against various EGFR downstream targets, please refer to our website at www.nanotools.de

Purification:	The antibody was purified from serum-free cell culture supernatant by subsequent ultrafiltration and size exclusion chromatography.
Formulation:	lyophilized from 1 ml PBS / 0.09 % Na-azide / PEG and Sucrose.
Reconstitution:	Reconstitute with 1 ml H ₂ O (15 min, RT).
Stability:	For long-term storage, freeze lyophilizate upon arrival (-20°C). Upon reconstitution, aliquote and freeze in liquid nitrogen; reconstituted antibody can be stored frozen at -80°C up to 1 year. Thaw aliquots at 37°C. Thawed aliquots may be stored at 4°C up to 3 months.

Avoid repeated freeze / thaw cycles.

Positive Control: #0832: Cell lysate from pervanadate-treated A431 cells

Immunoblotting: 1 µg/ml for HRPO/ECL detection
Recommended blocking buffer: Casein/Tween 20 based blocking and blot incubation buffer, e.g. nanoTools product #3031-500/CPPT or #3031-3000/CPPT.

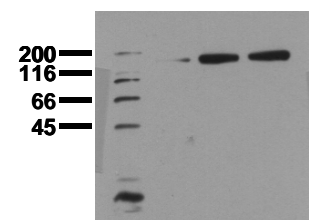
Immunoprecipitation: ND

Immunocytochemistry: ND

ELISA: use at 0.1 µg/ml

All products are supplied for research and investigational use only. Not for use in humans or laboratory animals.

co EGF VH



Phosphospecificity

Whole cell extracts of control (co), EGF stimulated (EGF) or pervanadate treated (VH) MDA-MB 468 tumor cells were applied to SDS-PAGE (ca 20,000 cells per lane) and transferred to a PVDF membrane. The immunoblot was probed with mab EGFR-8B8 (0.5 µg/ml) for 1h at RT and developed by ECL (exp. time: 30 sec).