

## Mouse Monoclonal Antibody to

# IGF1 Receptor (C-terminus)

## clone 7G11

**Order No.:** 0198-100/IGF1R-7G11  
**Size (µg)** 100  
**Lot No.:** 0198S



[www.nanotools.de](http://www.nanotools.de)

**orders & support:**

email: [info@nanotools.de](mailto:info@nanotools.de)  
 phone: +49-7641-455 670  
 fax: +49-7641-455 671

02/160307F

Isotype	Species Reactivity	Applications	Mol. Weight	Ref.Cell Line	Epitope	Immunogen
IgG1	human	WB	97 kDa	A431	C-terminus	peptide conjugated to hemocyanin

### Background and Specificity:

The IGF1 receptor (IGF1R) is a heterodimeric receptor tyrosine kinase with an extracellular alpha-chain, a transmembrane domain and an intracellular beta-chain. The IGF1 receptor is activated upon binding of the peptide hormones IGF1 and 2, leading to autophosphorylation of tyrosine residue 1131, 1135, and 1136 in the activation loop of the beta-chain. Additional autophosphorylation sites such as tyrosine residue 950 and 1316 regulate the assembly of signal transduction complexes.

**Mab IGF1R-7G11** specifically recognizes the C-terminus of IGF1 receptor.

### Related Products

- mab to IGF1R (phospho-Tyr 1316)**  
#0128-100/IGF1R-2B9
- mab to InsR (phospho-Tyr 1150/1151)**  
#0143-100/InsR-10C3
- mab to InsR (phospho-Tyr 1322)**  
#0127-100/InsR-21G12
- mab to InsR (activation loop, phosphorylation independent)**  
#0142-100/InsR-9H4
- mab to InsR (C-terminus)**  
#0160-100/InsR-11B6

**Purification:** The antibody was purified from serum-free cell culture supernatant by subsequent thiophilic adsorption and size exclusion chromatography.

**Formulation:** lyophilized from 1 ml 2 x PBS / 0.09 % Na-azide / PEG and Sucrose.

**Reconstitution:** Reconstitute with 1 ml H<sub>2</sub>O (15 min, RT).

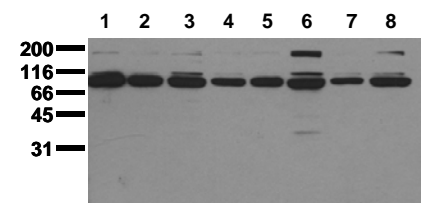
**Stability:** For long-term storage, freeze lyophilizate upon arrival (-20°C). Upon reconstitution, aliquote and freeze in liquid nitrogen; reconstituted antibody can be stored frozen at -80°C up to 1 year. Thaw aliquots at 37°C. Thawed aliquots may be stored at 4°C up to 3 months.

**Avoid repeated freeze / thaw cycles.**

**Positive Control:** #0831: Cell lysate from untreated A431 cells

**Immunoblotting:** 0.5 µg/ml for HRPO/ECL detection  
**Recommended blocking buffer:** Casein/Tween 20 based blocking and blot incubation buffer, e.g. nanoTools product #3031-500/CPPT or #3031-3000/CPPT.

**Immunoprecipitation:** ND  
**Immunocytochemistry:** ND  
**ELISA:** ND



**Detection of endogenous IGF1R**  
 Whole cell extracts of serum starved tumor cells (20.000 cells per lane) were applied to SDS-PAGE and transferred to PVDF membranes. Immunoblots were probed with mab IGF1R-7G11 (0.5 µg/ ml) for 1h at RT and developed by ECL (exp. time: 30 sec).  
 lane 1: A431; lane 2: A549; lane 3: SKOV3; lane 4: OVCAR5; lane 5: HaCaT; lane 6: PC3; lane 7: HeLa; lane 8: HepG2

**All products are supplied for research and investigational use only. Not for use in humans or laboratory animals.**