

Mouse Monoclonal Antibody to

GSK3 alpha

clone 10C1

Order No.: 0211-100/GSK3a-10C1
Size (µg) 100
Lot No.: 0211S

www.nanotools.de

orders & support:

email: info@nanotools.de
 phone: +49-7641-455 670
 fax: +49-7641-455 671



03/180407F

Isotype	Species Reactivity	Applications	Mol. Weight	Ref.Cell Line	Epitope	Immunogen
IgG1	human, mouse, rat, dog	WB	51 kDa	SKOV-3	peptide derived from GSK3alpha sequence	peptide conjugated to hemocyanin

Background and Specificity:

Glycogen Synthase Kinase 3 (GSK3) exists in two isoforms, alpha and beta (GSK3alpha, GSK3beta). GSK3 is a serine/threonine kinase that becomes phosphorylated by PKB/akt upon activation of the PI3K signal transduction pathway. Phosphorylation of GSK3alpha at serine 21 or GSK3beta at serine 9, respectively, leads to inhibition of kinase activity of GSK3.

Mab GSK3a-10C1 specifically recognizes GSK3alpha phosphorylation independent at 51 kDa in Western-blot applications. Mab GSK3a-10C1 does not crossreact with GSK3beta.

Related Products

- mab to GSK3alpha (phospho-Ser21)**
#0158-100/GSK3a-9B8
- mab to GSK3beta (phospho-Ser9)**
#0098-100/GSK3b-2D3
#0185-100/GSK3b-3A8
- mab to GSK3beta**
#0135-100/GSK3b-11B9
- mab to GSK3beta (phospho-Tyr215)**
#0258-100/GSK3b-6D3

Purification: The antibody was purified from serum-free cell culture supernatant by subsequent ultrafiltration and size exclusion chromatography.

Formulation: liquid; 0.1mg/ml in in PBS/0.09% Na-Azide/PEG and Sucrose/50% Glycerol

Reconstitution:

Stability: Aliquote and store at -20°C up to 1 year.

Avoid repeated freeze / thaw cycles.

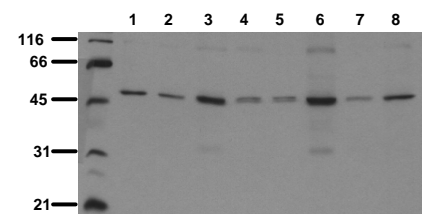
Positive Control: #0991: Cell lysate from untreated SKOV-3 cells

Immunoblotting: 0.5 µg/ml for HRPO/ECL detection
Recommended blocking buffer: Casein/Tween 20 based blocking and blot incubation buffer, e.g. nanoTools product #3031-500/CPPT or #3031-3000/CPPT.

Immunoprecipitation: ND

Immunocytochemistry: ND

ELISA: ND



Detection of endogenous GSK3alpha
 Whole cell lysates of serum starved tumor cells (20.000 cells per lane) were applied to SDS-PAGE and transferred to a PVDF membrane. The immunoblot was probed with mab GSK3a-10C1 (0.5 µg/ml) for 1h at RT and developed by ECL (exp. time: 30 sec).

lane 1: A431; lane 2: A549; lane 3: SKOV-3; lane 4: OVCAR-5; lane 5: HaCaT; lane 6: PC3M; lane 7: Hela; lane 8: HepG2

All products are supplied for research and investigational use only. Not for use in humans or laboratory animals.