

Mouse Monoclonal Antibody to

SAPK1 β /jnk3 (N-Terminus)

clone 4G6

Order No.: 0220-100/SAPK1b/jnk3-4G6
Size (μ g) 100
Lot No.: 0220S

www.nanotools.de

orders & support:

email: info@nanotools.de
 phone: +49-7641-455 670
 fax: +49-7641-455 671



04/080507F

Isotype	Species Reactivity	Applications	Mol. Weight	Ref.Cell Line	Epitope	Immunogen
IgG1	human	WB, IHC	54 kDa	SH-SY5Y	N-Terminus	peptide conjugated to hemocyanin

Background and Specificity:

Stress-activated Protein Kinases (SAPKs) are strongly activated in response to adverse stimuli such as heat and osmotic shock, UV light and other DNA-damaging reagents, and inhibitors of protein synthesis. They are also activated strongly in response to agonists that are released or produced under conditions of stress, such as proinflammatory cytokines. The SAPK1/jnk family consists of 3 isoforms: SAPK1 α /jnk2; SAPK1 β /jnk3; SAPK1 γ /jnk1.

Mab SAPK1b-4G6 specifically interacts with the N-terminus of SAPK1 β /jnk3 kinase.

Related Products

mab to SAPK1 γ /jnk1 (N-terminus)

#0200-100/SAPK1g-5D10

mab to SAPK1 α /jnk2 (N-terminus)

#0190-100/SAPK1a-12C5

mab to SAPK1/2 (T - G/P - pY)

#0041-100/SAPK1/2-9H8

mab to SAPK2 α (N-terminus)

#0034-100/SAPK2a-13D5)

#0035-100/SAPK2a-20B11

mab to SAPK2 δ (N-terminus)

#0053-100/SAPK2d-5H7

mab to MAPK 1/2 (pT-E-pY)

#0012-100/MAPK-12D4

mab to MAPK 2 (C-terminus)

#0011-100/MAPK2-6G11

mab to MAPK 2 (N-terminus)

#0178-100/MAPK2-6H3

mab to MAPK 2 (internal sequence)

#0239-100/MAPK2-12A4

mab to MAPK7/erk5

#0223-100/MAPK7/erk5-12F2

mab to Mxi 2 (N-terminus)

0046-100/Mxi-2F2

Purification: The antibody was purified from serum-free cell culture supernatant by subsequent ultrafiltration and size exclusion chromatography.

Formulation: lyophilized from 1 ml 2 x PBS / 0.09 % Na-azide / PEG and Sucrose.

Reconstitution: Reconstitute with 1 ml H₂O (15 min, RT).

Stability: For long-term storage, freeze lyophilizate upon arrival (-20°C). Upon reconstitution, aliquote and freeze in liquid nitrogen; reconstituted antibody can be stored frozen at -80°C up to 1 year. Thaw aliquots at 37°C. Thawed aliquots may be stored at 4°C up to 3 months.

Avoid repeated freeze / thaw cycles.

Positive Control: #1001: Cell lysate from untreated SH-SY5Y cells

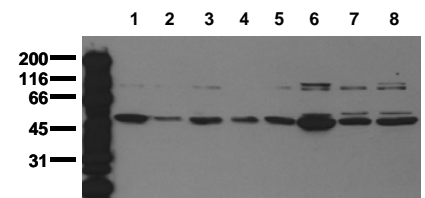
Immunoblotting: 0.5 μ g/ml for HRPO/ECL detection
Recommended blocking buffer: Casein/Tween 20 based blocking and blot incubation buffer, e.g. nanoTools product #3031-500/CPPT or #3031-3000/CPPT.

Immunoprecipitation: ND

Immunocytochemistry: ND

ELISA: ND

All products are supplied for research and investigational use only. Not for use in humans or laboratory animals.



Detection of endogenous SAPK1 beta

Whole cell lysates of serum starved tumor cells (20.000 cells per lane) were applied to SDS-PAGE and transferred to PVDF membranes. Immunoblots were probed with mab SAPK1b/jnk3-4G6 (0.5 μ g/ml) for 1h at RT and developed by ECL (exp. time: 30 sec).

lane 1: A431; lane 2: A549; lane 3: SKOV3; lane 4: OVCAR5; lane 5: HaCaT; lane 6: PC3; lane 7: HeLa; lane 8: HepG2