

Mouse Monoclonal Antibody to

MKK5 (N-terminus)

clone 14B5

Order No.: 0224-100/MKK5-14B5

Size (µg) 100

Lot No.: 0224S

www.nanotools.de

orders & support:

email: info@nanotools.de

phone: +49-7641-455 670

fax: +49-7641-455 671

06/290108F

Isotype	Species Reactivity	Applications	Mol. Weight	Ref. Cell Line	Epitope	Immunogen
IgG1	human, mouse, rat, dog	WB	45 kDa	A431	N-terminus	peptide conjugated to hemocyanin

Background and Specificity:

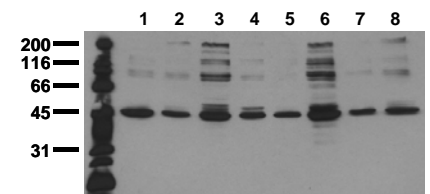
Mitogen-activated protein kinase kinase 5 (MKK5) belongs to the serine/threonine protein kinase family and the MAPK subfamily (MAP2K, MKK or MEKs). MKK5 specifically phosphorylates erk5/MAPK7 within the kinase activation loop pThr-E-pTyr motif. After activation erk5 phosphorylates MKK5 on multiple phosphoserine residues. The MKK5/erk5 pathway may play an important role in prostate and breast cancer.

Related Products

mab to MEK1 (pS218/222)
mab to MEK2 (pS222/226)
 #0174-100/MEK1/2-7E10
mab to MEK1 (N-terminus)
 #0186-100/MEK1-10B1
mab to MEK1/2
 #0150-100/MEK1/2-9G3
mab to MEK2 (N-terminus)
 #0148-100/MEK2-8E8
mab to MKK3 (N-terminus)
 #0166-100/MKK3-5F7
mab to MKK7 (N-terminus)
 #0189-100/MKK7-10F7
mab to MAPK 1/2 (pT-E-pY)
 #0012-100/MAPK-12D4
mab to MAPK 2 (C-terminus)
 #0011-100/MAPK-6G11
mab to MAPK 2 (N-terminus)
 #0178-100/MAPK-6H3
mab to MAPK 2 (internal sequence)
 #0239-100/MAPK2-12A4
mab to MAPK 7/erk 5
 #0223-100/MAPK7/erk5-12F2
mab to Fos (pS374)
 #0118-100/Fos-34E4
mab to Fos (N-terminus)
 #0122-100/Fos-8B5
mab to C-Raf (pS621)
 #0102-100/C-Raf-6B4
mab to C-Raf
 #0120-100/C-Raf-PBB-1

Purification:	The antibody was purified from serum-free cell culture supernatant by subsequent ultrafiltration and size exclusion chromatography.
Formulation:	lyophilized from 1 ml PBS / 0.09 % Na-azide / PEG and Sucrose
Reconstitution:	Reconstitute with 1 ml H ₂ O (15 min, RT).
Stability:	Upon reconstitution, aliquote and freeze in liquid nitrogen; reconstituted antibody can be stored frozen at -80°C up to 1 year. Thaw aliquots at 37°C. Thawed aliquots may be stored at 4°C up to 3 months. Avoid repeated freeze / thaw cycles.
Positive Control:	#0831: Cell lysate from untreated A431 cells
Immunoblotting:	0.5 µg/ml for HRPO/ECL detection Recommended blocking buffer: Casein/Tween 20 based blocking and blot incubation buffer, e.g. nanoTools product #3031-500/CPPT or #3031-3000/CPPT.
Immunoprecipitation:	ND
Immunocytochemistry:	ND
ELISA:	ND

All products are supplied for research and investigational use only. Not for use in humans or laboratory animals.



Detection of endogenous MKK5

Whole cell lysates of serum starved tumor cells (20.000 cells per lane) were applied to SDS-PAGE and transferred to a PVDF membrane. The immunoblot was probed with mab MKK5-14B5 (0.5 µg/ ml) for 1h at RT and developed by ECL (exp. time: 30 sec).

lane 1: A431; lane 2: A549; lane 3: SKOV3; lane 4: OVCAR5; lane 5: HaCaT; lane 6: PC3; lane 7: HeLa; lane 8: HepG2