

## Mouse Monoclonal Antibody to

# erbB4 (aa 1230-1250)

## clone 6C5

**Order No.:** 0228-100/erbB4-6C5

**Size (µg)** 100

**Lot No.:** 0228S

[www.nanotools.de](http://www.nanotools.de)

**orders & support:**

email: [info@nanotools.de](mailto:info@nanotools.de)

phone: +49-7641-455 670

fax: +49-7641-455 671

01/230207F

Isotype	Species Reactivity	Applications	Mol. Weight	Ref. Cell Line	Epitope	Immunogen
IgG1	human	WB	180 kDa	T47D	aa 1230-1250	peptide conjugated to hemocyanin

### Background and Specificity:

erbB4/Her4 is a member of the receptor tyrosine kinase subfamily that includes EGFR, erbB2/Her2, and erbB3/Her3. erbB4 is a receptor for Neuregulin 1 (NRG1) and regulates cell proliferation and differentiation.

**Mab erbB4-6C5** specifically recognizes erbB4 at 180 kDa in Western-blot applications.

<b>Purification:</b>	The antibody was purified from serum-free cell culture supernatant by subsequent ultrafiltration and size exclusion chromatography.
<b>Formulation:</b>	lyophilized from 1 ml PBS / 0.09 % Na-azide / PEG and Sucrose.
<b>Reconstitution:</b>	Reconstitute with 1 ml H <sub>2</sub> O (15 min, RT).
<b>Stability:</b>	For long-term storage, freeze lyophilizate upon arrival (-20°C). Upon reconstitution, aliquote and freeze in liquid nitrogen; reconstituted antibody can be stored frozen at -80°C up to 1 year. Thaw aliquots at 37°C. Thawed aliquots may be stored at 4°C up to 3 months.

**Avoid repeated freeze / thaw cycles.**

### Related Products

**mab to erbB4 (pospho-Tyr 1242)**

#0229-100/erbB4-4C6

**mab to erbB2 (aa 1240-1260)**

#0192-100/erbB2-19D2

**mab to erbB2 (intracellular domain; aa 860-880)**

#0222-100/erbB2-24B5

**mab to erbB2 (phospho-Ser 1113)**

#0139-100/erbB2-9E10

**mab to erbB2 (phospho-Thr 686)**

#0182-100/erbB2-7F8

**mab to erbB2 (phospho-Tyr 1112)**

#0216-100/erbB2-19G5

**mab to erbB2 (phospho-Tyr 1248; crossreacts with EGFR)**

#0221-100/erbB2-6G7

**mab to erbB3 (aa1250-1270)**

#0237-100/erbB3-5A12

**mab to erbB3 (C-terminus)**

#0141-100/erbB3-11A4

For monoclonal antibodies against EGFR and downstream targets, please refer to our website at [www.nanotools.de](http://www.nanotools.de)

**Positive Control:** #1011: Cell lysate from untreated T47D cells

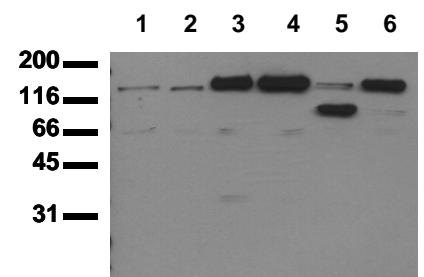
**Immunoblotting:** 0.5 µg/ml for HRPO/ECL detection  
**Recommended blocking buffer:** Casein/Tween 20 based blocking and blot incubation buffer, e.g. nanoTools product #3031-500/CPPT or #3031-3000/CPPT.

**Immunoprecipitation:** ND

**Immunocytochemistry:** ND

**ELISA:** ND

**All products are supplied for research and investigational use only. Not for use in humans or laboratory animals.**



**Detection of endogenous erbB4**

Whole cell extracts of serum starved tumor cells (20.000 cells per lane) were applied to SDS-PAGE and transferred to a PVDF membrane. The immunoblot was probed with mab erbB4-6C5 (0.5 µg/ ml) for 1h at 15-22°C and developed by ECL (exp. time: 30 sec).  
lane 1: MDA-MB 231; lane 2: MDA-MB 468; lane 3: MCF-7; lane 4: T47D; lane 5: SW480; lane 6: SW620