

Mouse Monoclonal Antibody to

erbB4 (phospho-Tyr 1242)

clone 4C6

Order No.: 0229-100/erbB4-4C6
Size (µg) 100
Lot No.: 0229S



www.nanotools.de

orders & support:

email: info@nanotools.de
 phone: +49-7641-455 670
 fax: +49-7641-455 671

02/140508F

Isotype	Species Reactivity	Applications	Mol. Weight	Ref.Cell Line	Epitope	Immunogen
IgG1	human	WB	180 kDa	MDA-MB-468	phospho-Tyrosine 1242 N P D pY W N H	phosphopeptide conjugated to hemocyanin

Background and Specificity:

erbB4/Her4 is a member of the receptor tyrosine kinase subfamily that includes EGFR, erbB2/her2, and erbB3/Her3. erbB4 is a receptor for Neuregulin 1 (NRG1) and regulates cell proliferation and differentiation. Tyr 1242 is a potential SHC binding site which leads to MAPK signalling pathway.

Mab erbB4-4C6 specifically recognizes erbB4 phosphorylated on Tyr 1242 at 180 kDa in Western-blot applications.

Related Products

- mab to erbB4 (aa1230-1250)**
#0228-100/erbB4-6C5
- mab to erbB2 (aa 1240-1260)**
#0192-100/erbB2-19D2
- mab to erbB2 (intracellular domain; aa 860-880)**
#0222-100/erbB2-24B5
- mab to erbB2 (phospho-Ser 1113)**
#0139-100/erbB2-9E10
- mab to erbB2 (phospho-Thr 686)**
#0182-100/erbB2-7F8
- mab to erbB2 (phospho-Tyr 1112)**
#0216-100/erbB2-19G5
- mab to erbB2 (phospho-Tyr 1248; crossreacts with EGFR)**
#0221-100/erbB2-6G7
- mab to erbB3 (aa1250-1270)**
#0237-100/erbB3-5A12
- mab to erbB3 (C-terminus)**
#0141-100/erbB3-11A4

For monoclonal antibodies against EGFR and downstream targets, please refer to our website at www.nanotools.de

Purification: The antibody was purified from serum-free cell culture supernatant by subsequent ultrafiltration and size exclusion chromatography.

Formulation: liquid in PBS/0.09% Na-Azide/PEG and Sucrose/50% Glycerol (1 ml, c = 100 µg/ml)

Reconstitution:

Stability: Aliquote and store at -20°C up to 1 year

Avoid repeated freeze/thaw cycles.

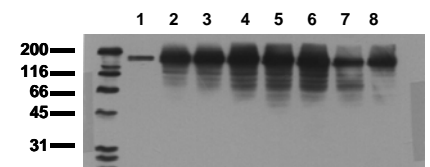
Positive Control: #1023: Cell lysate from EGF-treated MDA-MB 468 cells

Immunoblotting: 0.5 µg/ml for HRPO/ECL detection
Recommended blocking buffer: Casein/Tween 20 based blocking and blot incubation buffer, e.g. nanoTools product #3031-500/CPPT or #3031-3000/CPPT.

Immunoprecipitation: ND

Immunocytochemistry: ND

ELISA: ND



erbB4 activation

Serum starved MDA-MB468 cells were incubated with 10 ng/ml EGF for the indicated times. Whole cell lysates were prepared with lysis buffer V19 and separated by SDS-PAGE (ca 20.000 cells/lane). The immunoblot was probed with mab erbB4 - 4C6 (0.5 µg/ml) for 1h at RT and developed by ECL (exp. time: 30 sec).
 lane1: control; lane 2: 5 min EGF; lane 3: 15 min EGF;
 lane 4: 30 min EGF; lane 5: 1h EGF; lane 6: 2h EGF
 lane 7: 4h EGF; lane 8: 8h EGF

All products are supplied for research and investigational use only. Not for use in humans or laboratory animals.