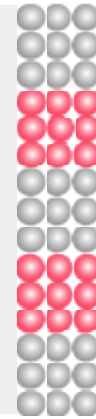


Mouse Monoclonal Antibody to

E-Cadherin clone 22F8

Order No.: 0234-100/ECAD-22F8
Size (µg) 100
Lot No.: 0234S



www.nanotools.de

orders & support:

email: info@nanotools.de
 phone: +49-7641-455 670
 fax: +49-7641-455 671

03/220207F

Isotype:	Species Reactivity	Applications	Mol. Weight	Ref.Cell Line	Epitope:	Immunogen:
IgG1	human	WB	124 kDa	A431	cytoplasmic domain	peptide conjugated to hemocyanin

Background and Specificity:

Cadherins are a family of transmembrane glycoproteins that play a key role in calcium-dependent cell-cell adhesion. Several members of the cadherin family have been identified so far, including E- (epithelial), P- (placental), N- (neuronal), and M- (muscle) cadherin. E-cadherin is expressed in most epithelial tissues.

Mab ECAD-22F8 specifically recognizes E-cadherin at 124 kDa.

Related Products

mab to human M-cadherin
 #0124-100/MCAD-21G4

mab to mouse M-cadherin
 #0106-100/MCAD-12G4

mab to N-cadherin
 #0235-100/NCAD-7E9

mab to Vimentin
 #0236-100/Vim-11H6

For monoclonal antibodies against beta-catenin, TFF3, and LEF, please refer to our website at www.nanotools.de

Purification: The antibody was purified from serum-free cell culture supernatant by subsequent ultrafiltration and size exclusion chromatography.

Formulation: lyophilized from 1 ml 2 x PBS / 0.09 % Na-azide / PEG and Sucrose.

Reconstitution: Reconstitute with 1 ml H₂O (15 min, RT).

Stability: For long-term storage, freeze lyophilizate upon arrival (-20°C). Upon reconstitution, aliquote and freeze in liquid nitrogen; reconstituted antibody can be stored frozen at -80°C up to 1 year. Thaw aliquots at 37°C. Thawed aliquots may be stored at 4°C up to 3 months.

Avoid repeated freeze / thaw cycles.

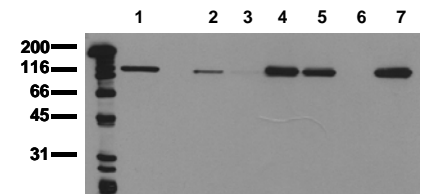
Positive Control: #0831: Cell lysate from untreated A431 cells

Immunoblotting: 0.5 µg/ml for HRPO/ECL detection
Recommended blocking buffer: Casein/Tween 20 based blocking and blot incubation buffer, e.g. nanoTools product #3031-500/CPPT or #3031-3000/CPPT.

Immunoprecipitation ND

Immunocytochemistry ND

ELISA: ND



Detection of endogenous E - cadherin

Whole cell lysates of serum starved tumor cells (20.000 cells per lane) were applied to SDS-PAGE and transferred to a PVDF membrane. The immunoblot was probed with mab ECAD-22F8 (0.5 µg/ ml) for 1h at RT and developed by ECL (exp. time: 30 sec).

lane 1: A431; lane 2: SW480; lane 3: SW620; lane 4: HT29; lane 5: MCF-7; lane 6: MDA-MB 231; lane 7: T47D

All products are supplied for research and investigational use only. Not for use in humans or laboratory animals.