

Mouse Monoclonal Antibody to

Phospholipase C γ

clone 2D5

Order No.: 0246-100/PLCg-2D5

Size (μ g) 100

Lot No.: 0246S



www.nanotools.de

orders & support:

email: info@nanotools.de

phone: +49-7641-455 670

fax: +49-7641-455 671

01/270207F

Isotype	Species Reactivity	Applications	Mol. Weight	Ref.Cell Line	Epitope	Immunogen
IgG1	human, mouse, rat, dog	WB	150 kDa	SKOV-3	aa 970-990	peptide conjugated to hemocyanin

Background and Specificity:

Phospholipase C gamma (PLC γ) binds to receptor tyrosine kinases, e.g. EGFR, PDGFR, leading to phosphorylation of PLC γ at Tyr 771, 783 and 1245. Phosphorylation of Tyr 783 leads to enzymatic activation of PLC γ . PLC γ hydrolyzes phosphatidylinositol-4,5-bisphosphate (PIP₂), thus generating the second messengers inositol-1,4,5-triphosphate (IP₃) and diacylglycerol (DAG).

Mab PLCg-2D5 specifically recognizes Phospholipase C γ at 150 kDa in Western blot applications.

Related Products

Purification:	The antibody was purified from serum-free cell culture supernatant by subsequent ultrafiltration and size exclusion chromatography.
Formulation:	lyophilized from 1 ml PBS / 0.09 % Na-azide / PEG and Sucrose.
Reconstitution:	Reconstitute with 1 ml H ₂ O (15 min, RT).
Stability:	For long-term storage, freeze lyophilizate upon arrival (-20°C). Upon reconstitution, aliquote and freeze in liquid nitrogen; reconstituted antibody can be stored frozen at -80°C up to 1 year. Thaw aliquots at 37°C. Thawed aliquots may be stored at 4°C up to 3 months.

Avoid repeated freeze / thaw cycles.

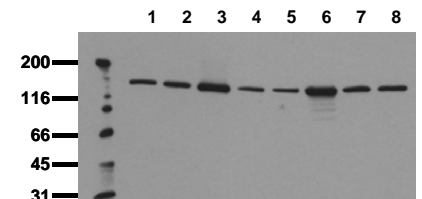
Positive Control: #0991: Cell lysate from untreated SKOV-3 cells

Immunoblotting: 0.5 μ g/ml for HRPO/ECL detection
Recommended blocking buffer: Casein/Tween 20 based blocking and blot incubation buffer, e.g. nanoTools product #3031-500/CPPT or #3031-3000/CPPT.

Immunoprecipitation: ND

Immunocytochemistry: ND

ELISA: ND



Detection of endogenous Phospholipase C γ

Whole cell lysates of EGF stimulated serum starved tumor cells (ca. 20.000 cells per lane) were applied to SDS-PAGE and transferred to a PVDF membrane. The immunoblot was probed with mab PLCg-2D5 (0.5 μ g/ml) for 1h at RT and developed by ECL (exp. time: 30 sec).

lane 1: A431; lane 2: A549; lane 3: SKOV3; lane 4: OVCAR5; lane 5: HaCaT; lane 6: PC3; lane 7: HeLa; lane 8: HepG2

All products are supplied for research and investigational use only. Not for use in humans or laboratory animals.