

Mouse Monoclonal Antibody to

GSK3 beta (pTyr 216) GSK3 alpha (pTyr 279) clone 6D3

Order No.: 0258-100/GSK3ab-6D3
Size (µg) 100
Lot No.: 0258S



www.nanotools.de

orders & support:

email: info@nanotools.de
phone: +49-7641-455 670
fax: +49-7641-455 671

03/060418F

Isotype	Species Reactivity	Applications	Mol. Weight	Ref.Cell Line	Epitope	Immunogen
IgG1	human, mouse	WB	46 kDa 54 kDa	HepG2	N V S pY I C S phosphotyrosine 216 phosphotyrosine 279	phosphopeptide conjugated to hemocyanin

Background and Specificity:

Glycogen Synthase Kinase 3 beta (GSK3beta) is a serine/threonine kinase that is acting independently of most signal transduction pathways. The activity of GSK3beta can be modulated by phosphorylation of Ser 9 and Tyr 216 in the activation loop. GSK3beta plays a crucial role in phosphorylation of beta-catenin and thus is an important kinase involved in the regulation of beta-catenin/wnt-signaling.

Mab GSK3b-6D3 specifically recognizes GSK3beta phosphorylated at Tyr 216 at 46 kDa and GSK3alpha phosphorylated at Tyr 279 at 54 kDa in Western blot applications.

Related Products

mab to GSK3alpha
#0211-100/GSK3a-10C1

mab to GSK3alpha (phospho-Ser21)
#0158-100/GSK3a-9B8

mab to GSK3beta
#0135-100/GSK3b-11B9

mab to GSK3beta (phospho-Ser9)
#0098-100/GSK3b-2D3
#0185-100/GSK3b-3A8

Purification: The antibody was purified from serum-free cell culture supernatant by subsequent ultrafiltration and size exclusion chromatography.

Formulation: lyophilized from 1 ml PBS / 0.09 % Na-azide / PEG and Sucrose

Reconstitution: Reconstitute with 1 ml H₂O (15 min, RT).

Stability: For long-term storage, freeze lyophilizate upon arrival (-20°C). Upon reconstitution, aliquote and freeze in liquid nitrogen; reconstituted antibody can be stored frozen at -80°C up to 1 year. Thaw aliquots at 37°C. Thawed aliquots may be stored at 4°C up to 3 months.

Avoid repeated freeze / thaw cycles.

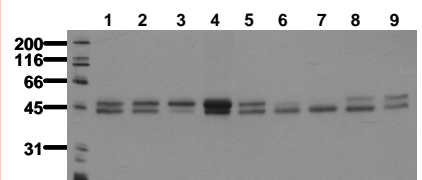
Positive Control: #0812: Cell lysate from pervanadate treated HepG2 cells.

Immunoblotting: 0.5 µg/ml for HRPO/ECL detection
Recommended blocking buffer: Casein/Tween 20 based blocking and blot incubation buffer, e.g. nanoTools product #3031-500/CPPT or #3031-3000/CPPT.

Immunoprecipitation: ND

Immunocytochemistry: ND

ELISA: ND



Detection of endogenous GSK3b pY215; GSK3a pY278
Whole cell lysates of serum starved tumor cells (20.000 cells per lane) were applied to SDS-PAGE and transferred to PVDF membranes. Immunoblots were probed with mab GSK3beta 6D3 (0.5 µg/ml) for 1h at RT and developed by ECL (exp. time: 30 sec).
lane 1: HeLa; lane 2: HepG2; lane 3: HEK293; lane 4: SH-SY5Y; lane 5: MDCK; lane 6: PC12; lane 7: CMT93; lane 8: Neuro 2A; lane 9: 3T3

All products are supplied for research and investigational use only. Not for use in humans or laboratory animals.