

## Mouse Monoclonal Antibody to

**pan RAB10**

**clone 605B11**

**Order No.:** 0680-100/RAB10-605B11

**Size (µg)** 100

**Lot No.:** 0680S

**www.nanotools.de**

**orders & support:**

email: info@nanotools.de

phone: +49-7641-455 670

fax: +49-7641-455 671

01/250918F

Isotype	Species Reactivity	Applications	Mol. Weight	Ref. Cell Line	Epitope	Immunogen
IgG1	human, mouse	WB	22,5 kD	none	D D K R V V	recombinant Rab10 protein

### Background and Specificity:

Rab10 is a small GTPase that is involved in the regulation of vesicular membrane trafficking. It has been shown to participate in transport of proteins from the Golgi network to the plasma membrane. It is responsible for delivery of GLUT4 glucose transporter to the plasma membrane. Rab10 is activated by the exchange of GDP to GTP which is catalysed by DENND4C exchange factor, and deactivated by GTP hydrolysis to GDP. Recently Rab10 has been shown to be phosphorylated by LRRK2 at the Thr73 site within the Switch II motif, adding another regulatory mechanism.

This pan Rab10 antibody specifically detects endogenous Rab10 when used for immunoblotting of human and mouse cell lines and tissue lysates. Specificity of the antibody was confirmed using A549 Rab10 knock-out cell line. The antibody is predicted to work in various mammalian species due to high Rab10 sequence conservation. This antibody will be very useful as a companion for the Phospho-Rab10 Thr73 immunoblotting to monitor total levels of Rab10 proteins in immunoblot analysis. As the total Rab10 antibody is mouse and the phospho-Rab10 Thr73 is a rabbit antibody these antibodies are suitable for multiplexing in which Phospho and total Rab10 can be monitored simultaneously in immunoblot analysis.

### Related Products

**Purification:** The antibody was purified from cell culture supernatant by affinity chromatography and subsequent buffer exchange.

**Formulation:** lyophilized from 1 ml PBS / 0.09 % Na-azide / PEG and Sucrose

**Reconstitution:** Reconstitute with 1 ml H<sub>2</sub>O (15 min, RT).

**Stability:** Upon reconstitution, aliquote and freeze in liquid nitrogen; reconstituted antibody can be stored frozen at -80°C up to 1 year. Thaw aliquots at 37°C. Thawed aliquots may be stored at 4°C up to 3 months. Avoid repeated freeze / thaw cycles.

**Positive Control:** none

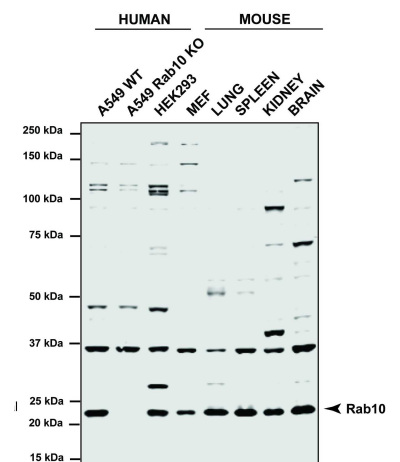
**Immunoblotting:** 1 µg/ml for HRPO/ECL detection  
**Recommended blocking buffer:** Casein/Tween 20 based blocking and blot incubation buffer, e.g. nanoTools product #3031-500/CPPT or #3031-3000/CPPT

**Immunoprecipitation:** ND

**Immunocytochemistry:** ND

**ELISA:** ND

**All products are supplied for research and investigational use only. Not for use in humans or laboratory animals.**



Immunoblot showing endogenous Rab10 in human cells (A549, HEK293) and mouse cells/tissues (MEF, lung, spleen, kidney, brain). Selectivity of the antibody is confirmed by the lack of detection in the Rab10 knock-out cells. Antibody used at 1 µg/ml. (Image by courtesy of Prof. Dario Alessi, University of Dundee, U.K.)