

Mouse Monoclonal Antibody to

hu DJ-1/Park7

clone 407F8

Order No.: 0681-100/DJ-1-407F8

Size (µg) 100

Lot No.: 0681S

www.nanotools.de

orders & support:

email: info@nanotools.de

phone: +49-7641-455 670

fax: +49-7641-455 671

02/290120F

Isotype	Species Reactivity	Applications	Mol. Weight	Ref.Cell Line	Epitope	Immunogen
IgG2b	human	WB, ELISA, capture ELISA, Luminex	20 kDa			recombinant human DJ-1

Background and Specificity:

DJ-1 is widely expressed in mammals and highly conserved between species. It forms a homodimer and has multiple functions: protection against oxidative stress and cell death, chaperone activity, regulation of transcription and protein degradation.

DJ-1 is suggested to be associated with neurodegenerative disorders such as Parkinson's disease, Alzheimer's disease and ischemic stroke.

Mab **DJ-1-407F8** is particularly suitable as capture antibody in sandwich ELISA. Typical applications are Western Blot, ELISA and Luminex assays.

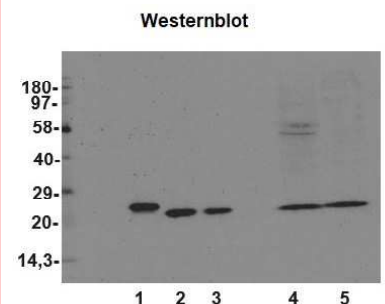
Related Products

References:

Neuroprotective Function of DJ-1 in Parkinson's Disease. Hiroyoshi Ariga et al., *Oxidative Medicine and Cellular Longevity*, Volume 2013, Article ID 683920. <http://dx.doi.org/10.1155/2013/683920>

DJ-1/PARK7: A New Therapeutic Target for Neurodegenerative Disorders. Masanori Hijioaka et al., *Biological and Pharmaceutical Bulletin* 2017, Vol. 40, Issue 5, 548-552. DOI: <https://doi.org/10.1248/bpb.b16-01006>

Purification:	The antibody was purified from serum-free cell culture supernatant by affinity chromatography and subsequent buffer exchange.
Formulation:	liquid; 1 mg/ml in PBS/0.09% Na-Azide/PEG and Sucrose
Stability:	Aliquote and freeze in liquid nitrogen; antibody can be stored frozen at -80°C up to 1 year. Thaw aliquots at 37°C. Thawed aliquots may be stored at 4°C up to 3 months. Avoid repeated freeze / thaw cycles.
Reconstitution:	
Positive Control:	none
Immunoblotting:	1 µg/ml for HRPO/ECL detection. Recommended blocking buffer: Casein/Tween 20 based blocking and blot incubation buffer, e.g. nanoTools product #3031-500/CPPT.
Flow Cytometry:	ND
Immunoprecipitation:	ND
Immunocytochemistry:	ND
ELISA:	direct ELISA: use at 1-5 ng/ml sandwich ELISA: use at 0,1 µg/well
Luminex:	KD > 10 pM



Recombinant DJ1-his (lane 1), untagged DJ1 (lane 2), TEV-cleaved DJ1 (lane 3), whole cell extracts of HEK293 (lane 4) and HepG2 cells (lane 5) were applied to SDS-PAGE and transferred to a PVDF membrane. The immunoblot was probed with mab DJ1-407F8 (1 µg/ml) for 1h at RT and developed by ECL (exp. time: 15 sec)

All products are supplied for research and investigational use only. Not for use in humans or laboratory animals.